

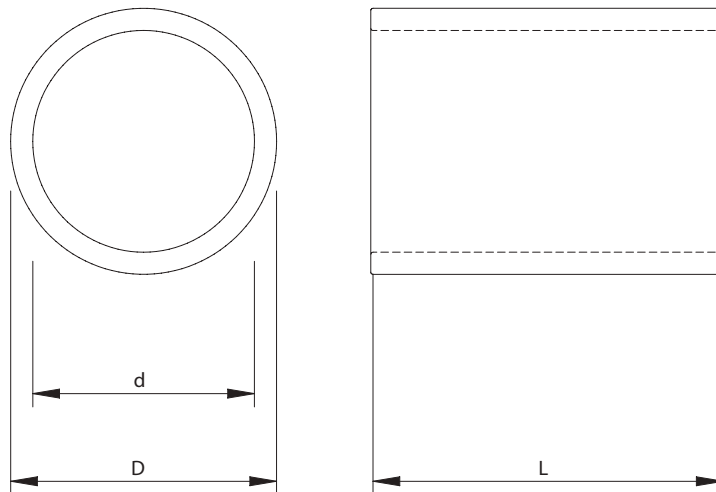
# SLEEVES

# C Marine Sleeve

Sleeve without flange for Hawke Round transits.

## CHARACTERISTICS

- ◆ Designed to be welded.
- ◆ Materials: Mild Steel, Stainless Steel and Aluminium
- ◆ To be sealed with standard or EMC HRT/HRTO and HRST.
- ◆ Ex available under request.



## Mild Steel

DESCRIPTION	d (mm)	D (mm)	L (mm)	Weight (kg)
MS C -30 L=80	34	42	80	0,3
MS C -40 L=80	40	50	80	0,4
MS C -50 L=80	50	60	80	0,5
MS C -70 L=80	70	80	80	0,7
MS C -100 L=80	100	110	80	1,0
MS C -125 L=80	125	140	80	2,0
MS C -150 L=80	150	171	80	3,3
MS C -175 L=80	175	193,7	80	3,4
MS C -200 L=80	200	220	80	4,1

\*All dimensions are nominal values

## C Marine Sleeve

### Stainless Steel

DESCRIPTION	d (mm)	D (mm)	L (mm)	Weight (kg)
SS C -30 L=80	33	42	80	0,3
SS C -40 L=80	40	50	80	0,4
SS C -50 L=80	50	60,3	80	0,6
SS C -70 L=80	70	88,9	80	1,5
SS C -100 L=80	100	114,3	80	1,5
SS C -125 L=80	125	141,3	80	2,2
SS C -150 L=80	150	168,3	80	2,9
SS C -175 L=80	175	194	80	-
SS C -200 L=80	200	220	80	4,2

\*All dimensions are nominal values

### Aluminium

DESCRIPTION	d (mm)	D (mm)	L (mm)	Weight (kg)
AL C -30 L=80	33	45	80	0,2
AL C -40 L=80	40	50	80	0,2
AL C -50 L=80	50	60	80	0,2
AL C -70 L=80	70	80	80	0,3
AL C -100 L=80	100	110	80	0,4
AL C -125 L=80	125	135	80	0,4
AL C -150 L=80	150	170	80	1,1
AL C -175 L=80	175	190	80	0,9
AL C -200 L=80	200	220	80	1,4

\*All dimensions are nominal values



#### Installation references

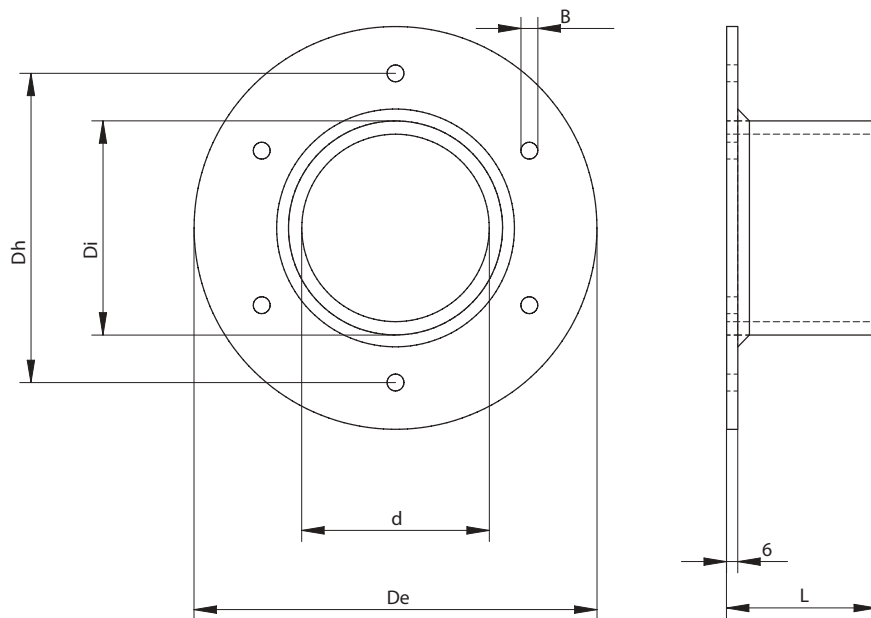
	page
See assembly parts	67
See round frame HRT0	50
See round frame HRST	52
See accessories	77
See installation guide	119
See welding instructions	157
See inspection check	165

# CB Sleeve

Sleeves with flange for Hawke Round transits.

## CHARACTERISTICS

- ◆ Designed to be bolted or casted
- ◆ Materials: Mild Steel, Stainless Steel and Aluminium
- ◆ To be sealed with standard or EMC HRT/HRTO and HRST.
- ◆ Ex available under request.



## Mild Steel

DESCRIPTION	d (mm)	Di (mm)	De (mm)	Dh (mm)	L (mm)	B (mm)	Holes	Weight (kg)
MS CB-30	30	42	90	70	80	9	4	0,6
MS CB-40	40	50	100	80	80	9	4	0,7
MS CB-50	50	60	110	90	80	9	4	0,8
MS CB-70	70	80	130	110	80	9	4	1,3
MS CB-100	100	110	215	165	80	9	6	2,8
MS CB-125	125	140	240	190	80	9	6	3,4
MS CB-150	150	171	270	220	80	11	6	4,8
MS CB-175	175	194	-	-	80	-	-	-
MS CB-200	200	220	320	270	80	11	6	6,2

\*All dimensions are nominal values

# CB Sleeve

## Stainless Steel

DESCRIPTION	d (mm)	Di (mm)	De (mm)	Dh (mm)	L (mm)	B (mm)	Holes	Weight (kg)
SS CB-30	34	42	90	70	80	9	4	0,6
SS CB-40	40	50	100	80	80	9	4	0,7
SS CB-50	50	60	110	90	80	9	4	0,9
SS CB-70	70	89	130	110	80	9	4	1,3
SS CB-100	100	114	215	165	80	9	6	2,9
SS CB-125	125	141	240	190	80	9	6	3,5
SS CB-150	150	168	270	220	80	11	6	5,0
SS CB-175	175	-	-	-	80	-	-	-
SS CB-200	200	220	320	270	80	11	6	6,3

\*All dimensions are nominal values

SLEEVES



### Installation references

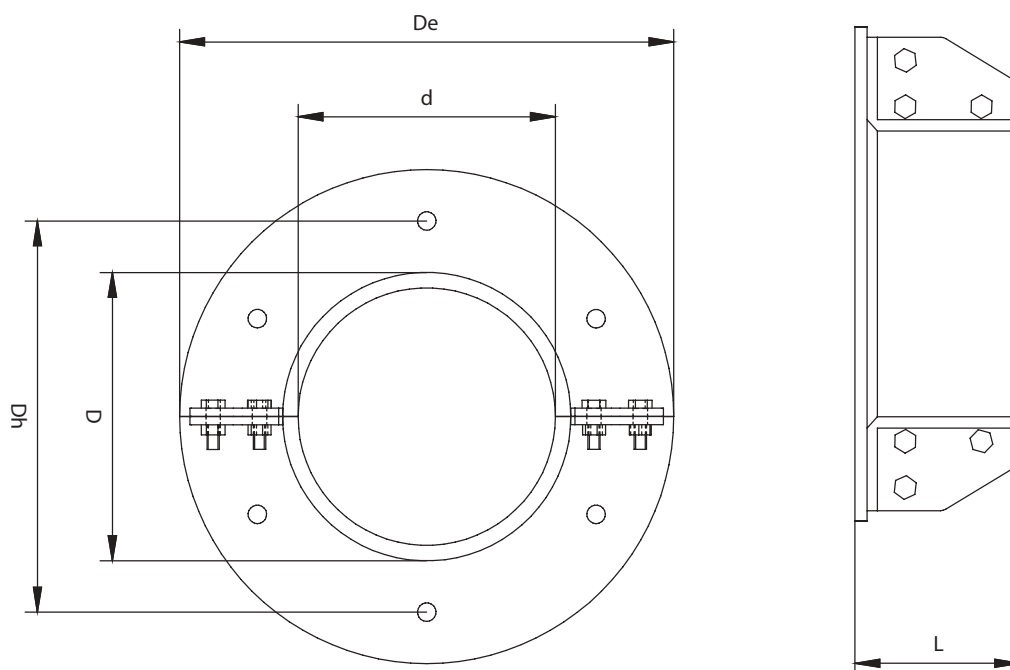
	page
See assembly parts	67
See round frame HRT0	50
See round frame HRST	52
See accessories	77
See installation guide	119
See bolted instructions	153
See inspection check	165

# CBO Sleeve

Sleeve with flange and removable end which allows installation around existing cables. To be used with Hawke Round transits.

## CHARACTERISTICS

- ◆ Designed to be bolted or casted
- ◆ Materials: Mild Steel, Stainless Steel and Aluminium
- ◆ To be sealed with standard or EMC HRT/HRTO and HRST.
- ◆ Ex available under request.



## Mild Steel

DESCRIPTION	d (mm)	D (mm)	De (mm)	Dh (mm)	L (mm)	B (mm)	Holes	Weight (kg)
MS CBO-30	30	42	90	70	80	9	4	0,8
MS CBO-40	40	51	100	80	80	9	4	0,9
MS CBO-50	50	60,3	110	90	80	9	4	1,0
MS CBO-70	70	82,5	130	110	80	9	4	1,5
MS CBO-100	100	114,3	215	165	80	9	6	3,1
MS CBO-125	125	140	240	190	80	9	6	3,7
MS CBO-150	150	171	270	220	80	11	6	5,1
MS CBO-175	175	-	-	-	80	-	-	-
MS CBO-200	200	219,1	320	270	80	11	6	6,4

\*All dimensions are nominal values

# CBO Sleeve

## Stainless Steel

DESCRIPTION	d (mm)	D (mm)	De (mm)	Dh (mm)	L (mm)	B (mm)	Holes	Weight (kg)
SS CBO-30	30	42,2	90	70	80	9	4	0,8
SS CBO-40	40	50	100	80	80	9	4	0,9
SS CBO-50	50	60,3	110	90	80	9	4	1,1
SS CBO-70	70	88,9	135	110	80	9	4	1,5
SS CBO-100	100	114,3	215	165	80	9	6	3,1
SS CBO-125	125	140	240	190	80	9	6	3,8
SS CBO-150	150	168,3	270	220	80	11	6	5,2
SS CBO-175	175	-	-	-	80	-	-	-
SS CBO-200	200	219,1	320	270	80	11	6	6,6

\*All dimensions are nominal values

SLEEVES



### Installation references

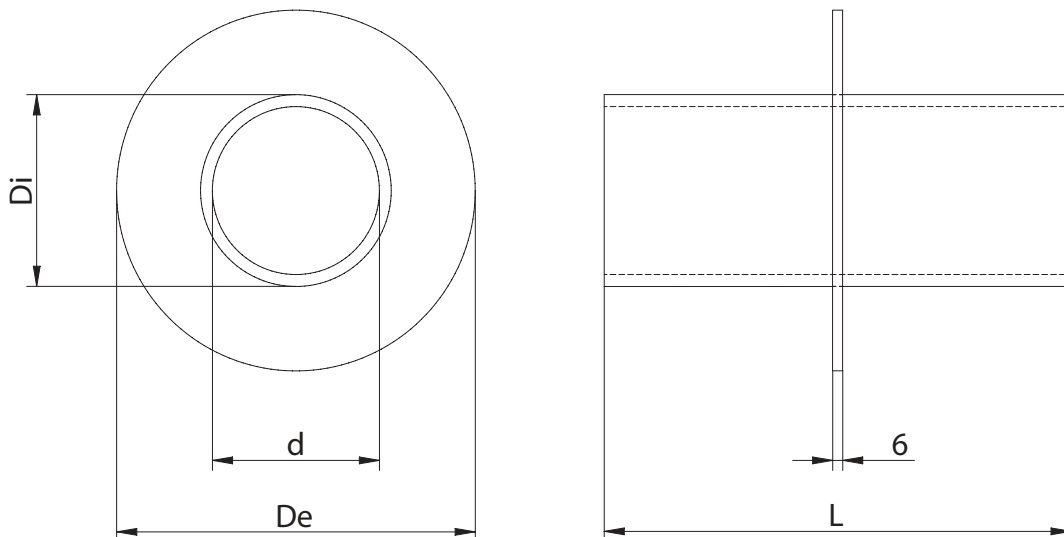
	page
See assembly parts	67
See round frame HRT0	50
See round frame HRST	52
See accessories	77
See installation guide	119
See bolted instructions	153
See inspection check	165

# CBC Sleeve

Sleeve with flange for Hawke Round transits.

## CHARACTERISTICS

- ◆ Designed to be casted.
- ◆ Materials: Mild Steel, Stainless Steel and Aluminium.
- ◆ To be sealed with standard or EMC HRT/HRTO and HRST.



## Mild Steel

DESCRIPTION	d (mm)	Di(mm)	De (mm)	L (mm)	Min.Weight (kg)
MS CBC-30	30	42	90	min 80	0,6
MS CBC-40	40	50	100	min 80	0,7
MS CBC-50	50	60	110	min 80	0,8
MS CBC-70	70	80	130	min 80	1,3
MS CBC-100	100	110	215	min 80	2,8
MS CBC-125	125	140	240	min 80	3,4
MS CBC-150	150	171	270	min 80	4,8
MS CBC-175	175	194	-	min 80	-
MS CBC-200	200	220	320	min 80	6,2

\*All dimensions are nominal values

\*Lenght (L) on demand in purchase order, minimum 80mm

\*\*Weight indicated for minimum lenght of 80mm



# CBC Sleeve

## Stainless Steel

DESCRIPTION	d (mm)	Di(mm)	De (mm)	L (mm)	Min.Weight (kg)
SS CBC-30	34	42	90	min 80	0,6
SS CBC-40	40	50	100	min 80	0,7
SS CBC-50	50	60	110	min 80	0,9
SS CBC-70	70	89	130	min 80	1,3
SS CBC-100	100	114	215	min 80	2,9
SS CBC-125	125	141	240	min 80	3,5
SS CBC-150	150	168	270	min 80	5,0
SS CBC-175	175	-	-	min 80	-
SS CBC-200	200	220	320	min 80	6,3

\*All dimensions are nominal values

\*Lenght (L) on demand in purchase order, minimum 80mm

\*\*Weight indicated for minimum lenght of 80mm



### Installation references

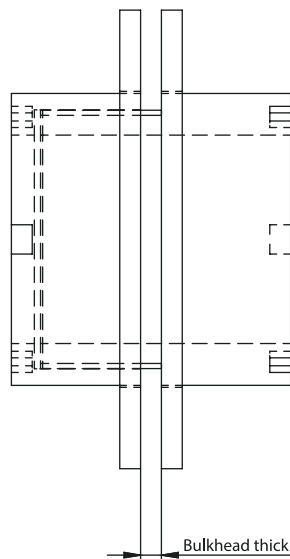
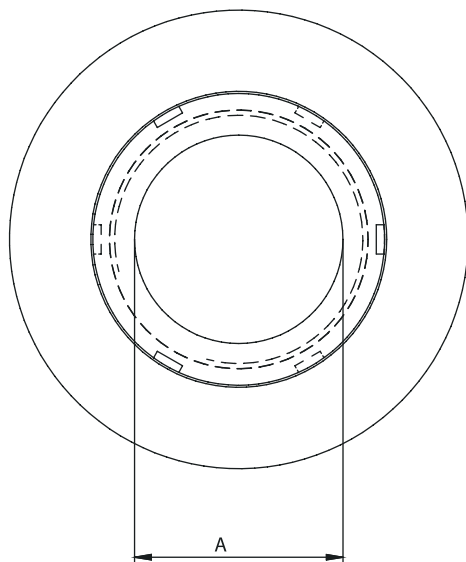
	page
See assembly parts	67
See round frame HRT0	50
See round frame HRST	52
See accessories	77
See installation guide	119
See casted instructions	152
See inspection check	165

# CBT Sleeve

Two piece sleeve with flanges, secured by threading.

## CHARACTERISTICS

- ◆ Two piece version; adaptable to different bulkhead thicknesses.
- ◆ Material: Mild steel.
- ◆ Required accessories: Hawke fire resistant silicone.
- ◆ No welding is needed.



DESCRIPTION	A (mm)	SUITABLE FOR
CBT-50	50	HRST-50 Series
CBT-70	70	HRST-70 Series
CBT-100	100	HRST-100 Series
CBT-125	125	HRST-125 Series
CBT-150	150	HRST-150 Series
CBT-175	175	HRST-175 Series
CBT-200	200	HRST-200 Series

## Installation references

	page
See round frame HRST	52
See accessories	77
See installation guide	119
See inspection check	171