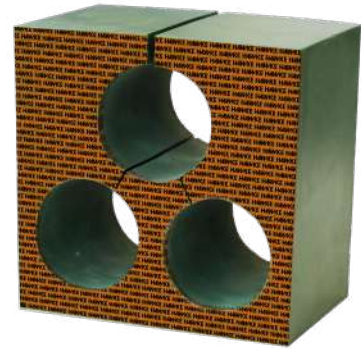
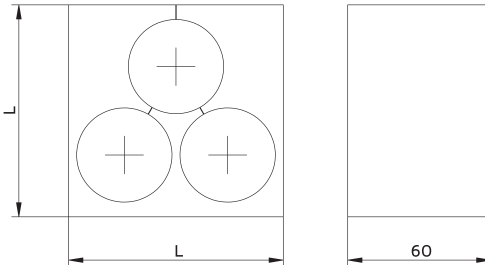


◆→ TREFOIL BLOCKS

Hawke trefoil blocks are used to accommodate three singles phase power cables within the same block. This negates eddy currents being induced into a ferrous steel frame thus negating heat induction within the frame.



DESCRIPTION	L (mm)	CABLES DIAMETER (MM)	WEIGHT (KG)	COLOUR
HF80-3-28	80	28	-	Yellow
HF80-3-30	80	30	-	Purple
HF80-3-32	80	32	-	Brown
HF90-3-26	90	26	0,57	White
HF90-3-28	90	28	0,54	Blue
HF90-3-30	90	30	0,51	Pink
HF90-3-32	90	32	0,49	Red
HF90-3-34	90	34	0,46	Orange
HF90-3-36	90	36	0,43	Brown
HF90-3-38	90	38	0,4	Purple
HF90-3-40	90	40	0,37	Yellow
HF120-3-41	120	41	0,9	Red
HF120-3-43	120	43	0,86	White
HF120-3-45	120	45	0,83	Blue
HF120-3-47	120	47	0,79	Pink
HF120-3-49	120	49	0,75	Orange
HF120-3-51	120	51	0,71	Yellow

◆→ SPECIAL INSERT BLOCKS

- ◆ When Hawke Transit Frames are penetrated by services that are shaped anything other than circular, e.g. busbars, special cables, earthtraps, etc. Special blocks can be manufactured.
- ◆ All special blocks are tested in our laboratory to ensure viability and performance.
- ◆ Please contact our Sales Department for more information.

