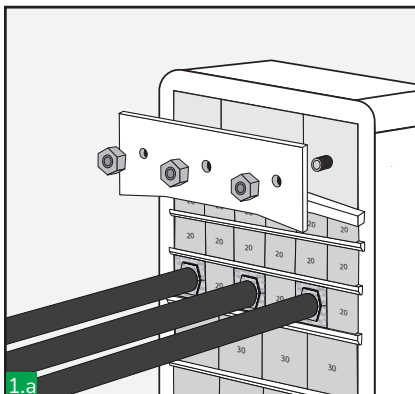


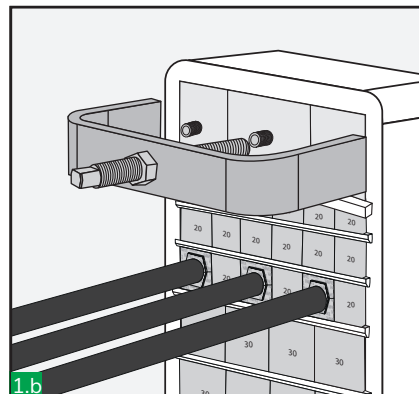
→ **PULLER** Use guide:

For future modification of the transit the system must be capable of being broken down. This is simple to achieve with a basic reversal of the assembly method described in the installation instructions. The only exception is the use of the puller tool to remove the Endpacker centre block.

1

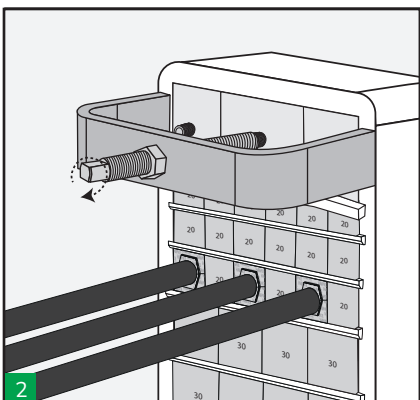


1.a



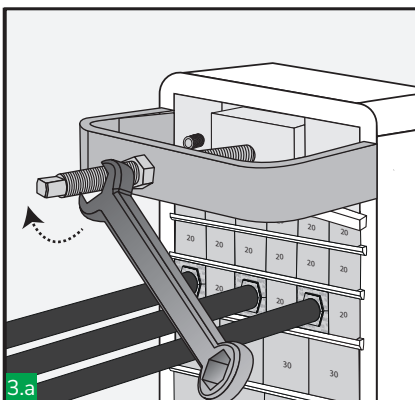
1.b

Remove endpacker nuts and front plate.

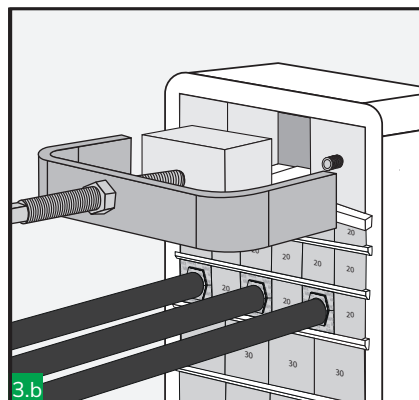


2

Turn the puller screw clockwise until it is fully screwed into the central piece of the endpacker.



3.a



3.b

The nut of the puller is then turned clockwise and the centre block is then jacked out of the assembly.