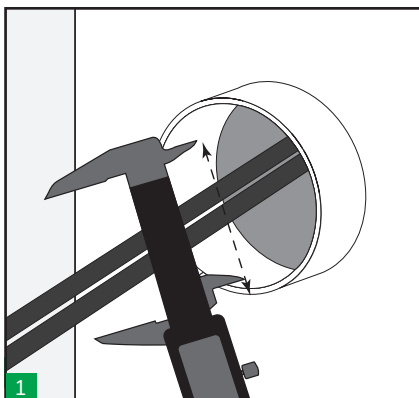
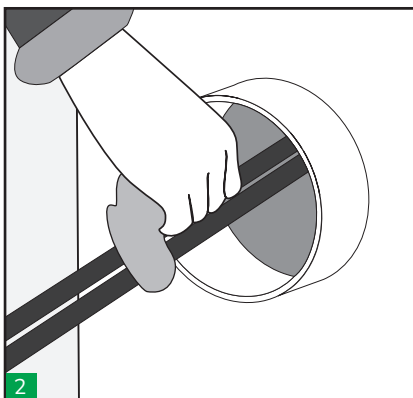


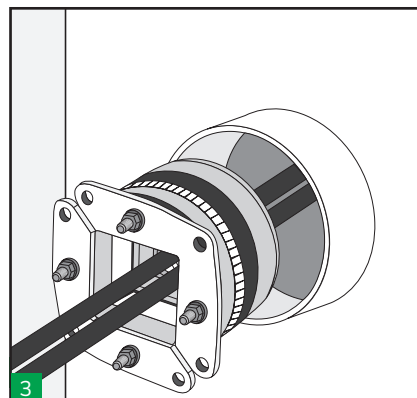
HRTO / HRT EMC ROUND SYSTEM Installation guide:



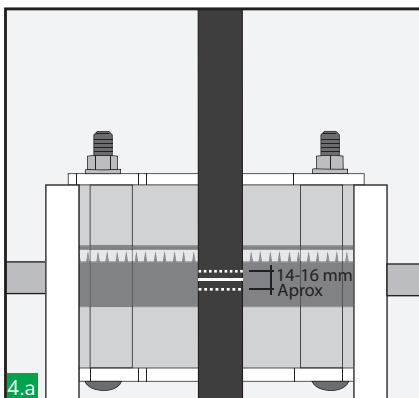
1 Measure the inside of pipe aperture to ensure that it is within the tolerance of the round transit frame to be used.



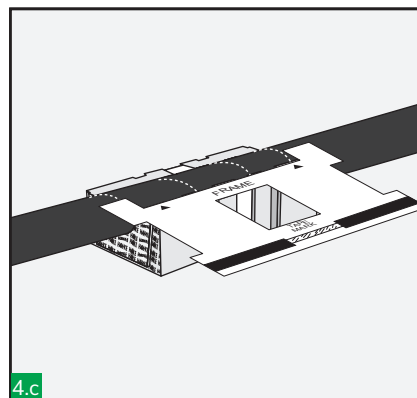
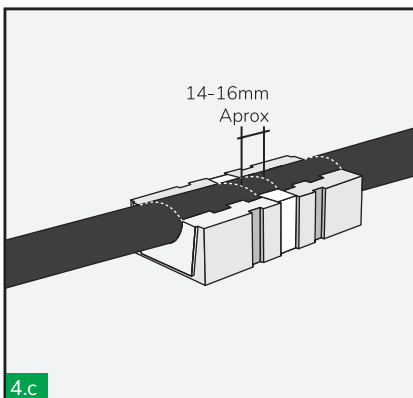
2 Make sure the frame is clean and there are not rust.



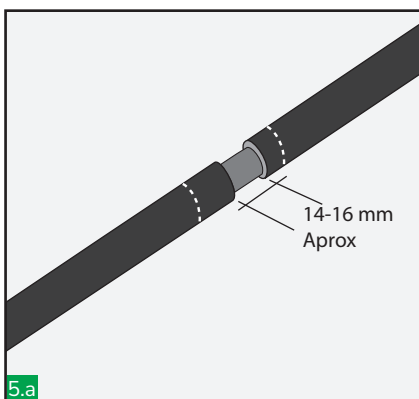
3 Insert the round transit frame completely in the sleeve around the cables and open the two front plates. (HRT030, HRT040 & HRT050 front plates are fixed). No lubricant should be applied to the aperture or outside of the frame.



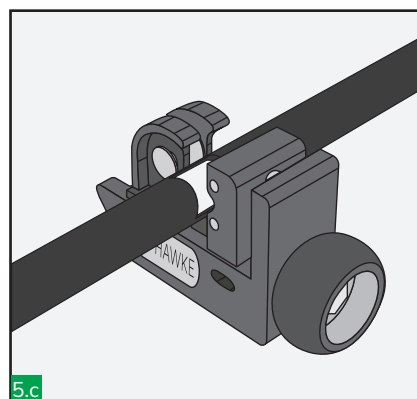
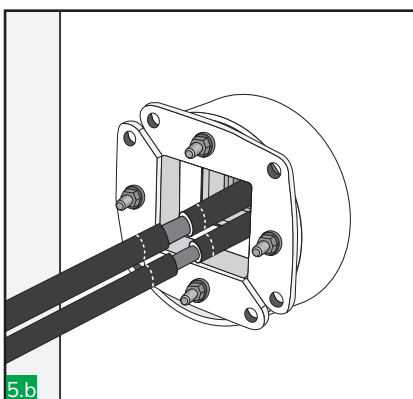
4.a Mark each cable in the centre of the frame and 7-8mm either side of this point. Also, recommendable to mark the cable in both ends of the frame.



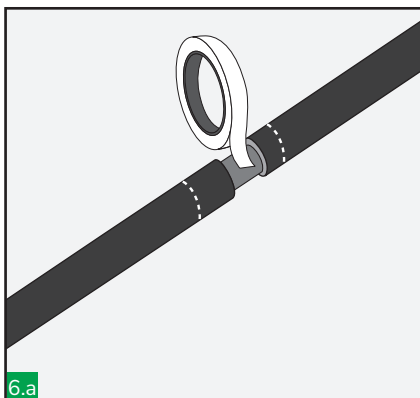
EMC marking tool could help you to reduce time and ensure a correct marking.



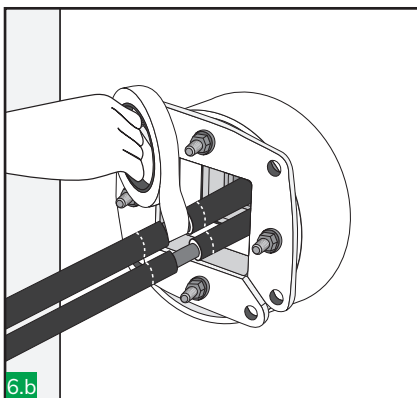
5.a Cut and remove cable sheath between two central marks, to expose the cables conductive screen.



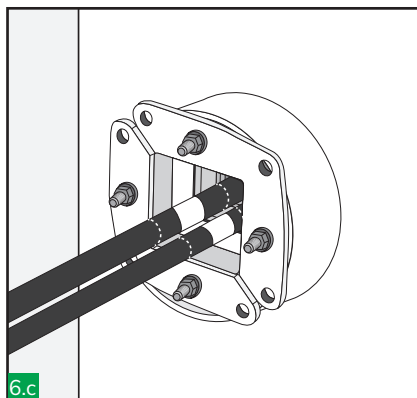
5.c EMC cable sheath remove tool could help you to reduce time and ensure a correct cutting.



6.a

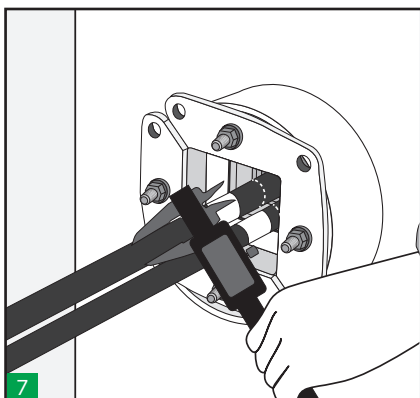


6.b



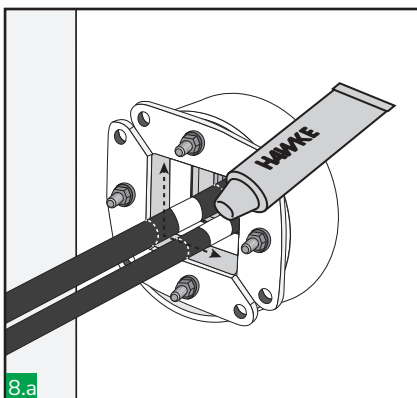
6.c

Using copper tape provided tightly wrap around the exposed screen until the cable outer diameter is regained. Repeat these steps for all cables.



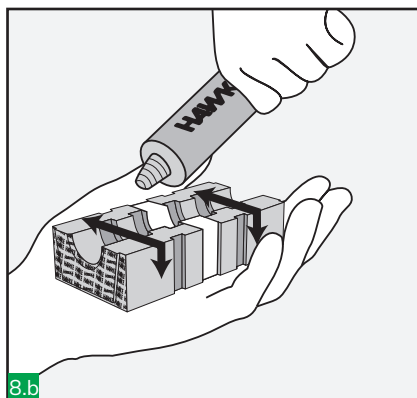
7

Take measures of the cables diameters and select the appropriate HTS Tolerant Blocks.

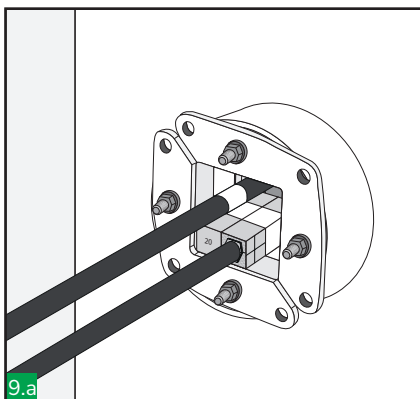


8.a

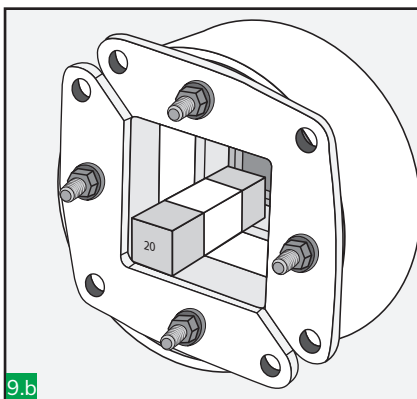
Lubricate the inside of the HRTO and all the insert and blank blocks using HTS lubricant. Be careful don't contaminate the copper tape.



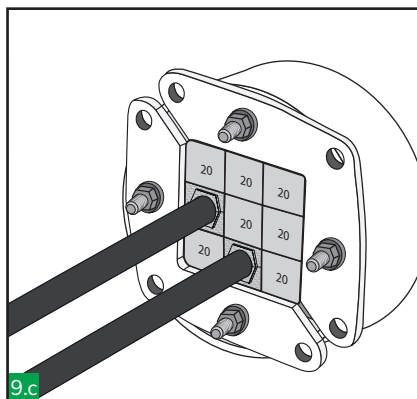
8.b



9.a

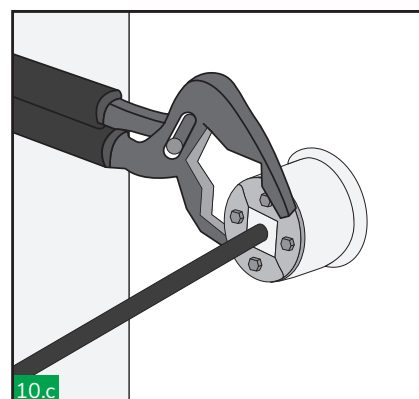
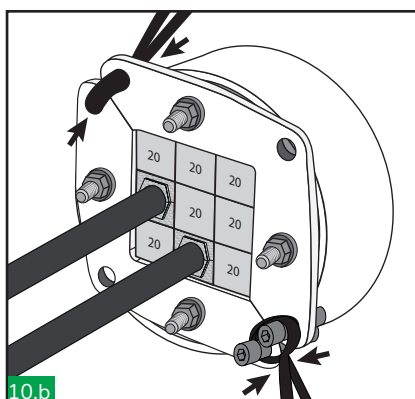
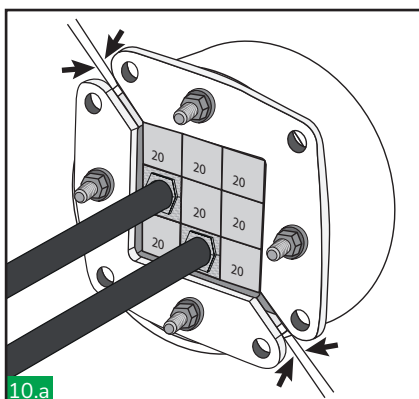


9.b



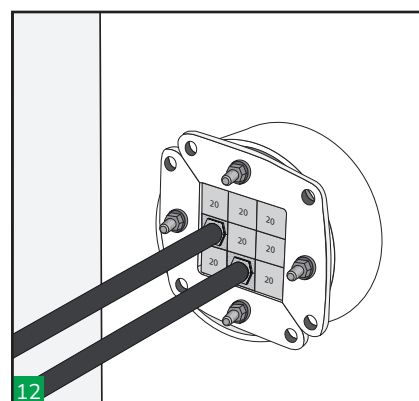
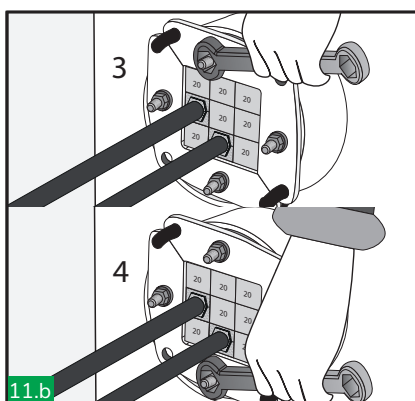
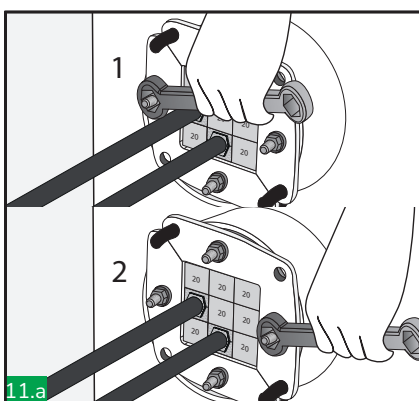
9.c

Begin packing the transit frame starting at the bottom and finishing at the top. Ensure that the blocks are pushed firmly against the rear retaining lip. Verify that the complete sealing area of this frame size (see table) is filled with blocks.



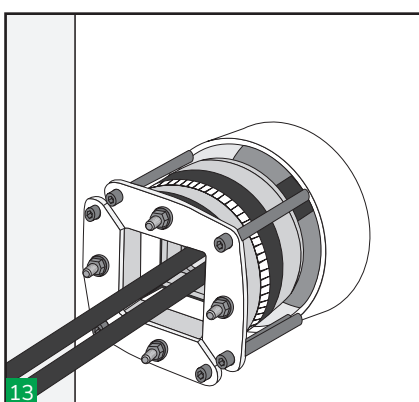
Slide the two front plates together and keep it fixed. Ensure all the blocks are located inside the front retaining lip.

For an easier installation, cable ties, bolts or adjustable pliers can be used to close this plates.



Tighten the nuts approximately 2mm each time following alternate tightening sequence, applying equal pressure to both plates.
A minimum of 10 mm of thread should protrude on each bolt.
Use a ratchet spanner for an easier installation.

Make a visual inspection of the transit.
Check that marks in all cables are visible to be guarantee blocks and cable copper tapes are aligned.

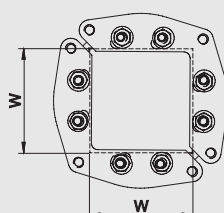


Extraction is achieved by releasing the compression, i.e. by reversing steps 10 and 11 and screwing M8 bolts (not supplied) into the threaded holes at each corner of the front plates. These releases the assembly from the aperture and allows the system to be disassembled.

Notes

Leave the system at least 24 hours before applying pressure.
For disassembly see disassembly installation instructions.

Sealing Area



| TYPE | SEALING AREA (mm) |
|----------|-------------------|
| HRT0-30 | 15x15 |
| HRT0-40 | 20x20 |
| HRT0-50 | 30x30 |
| HRT0-70 | 40x40 |
| HRT0-100 | 60x60 |
| HRT0-125 | 80x80 |
| HRT0-150 | 90x90 |
| HRT0-200 | 120x120 |

