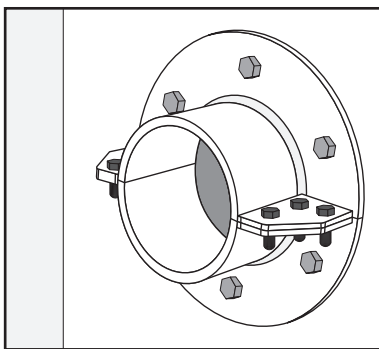
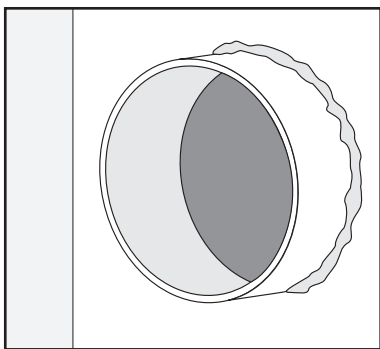
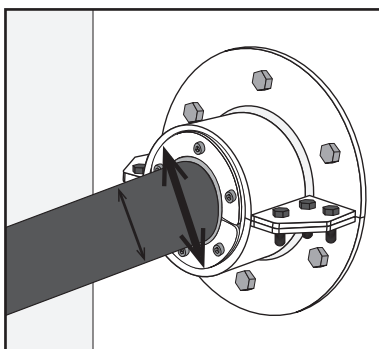


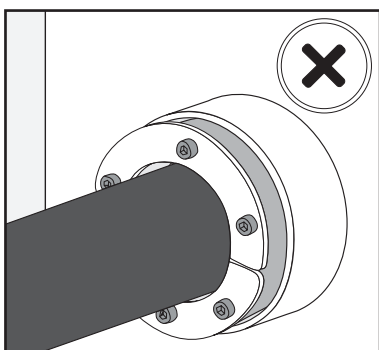
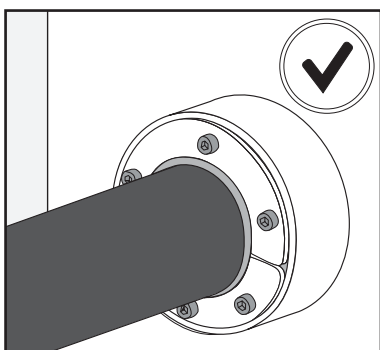
→ **ROUND HRST STANDARD** installation and inspection checks guidelines:



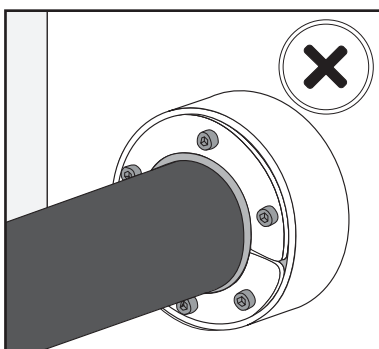
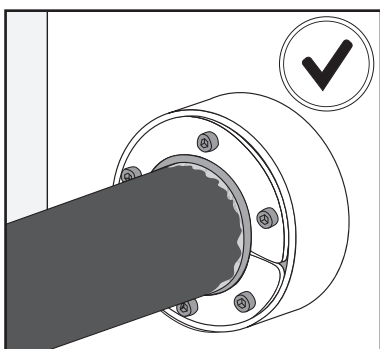
Check that Hawke Sleeve has been used in the installation, that it has been properly installed (welded/bolted) and that it has not mechanical or corrosion damage.



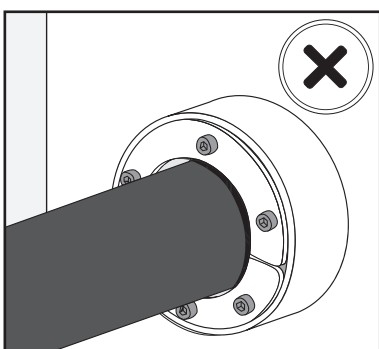
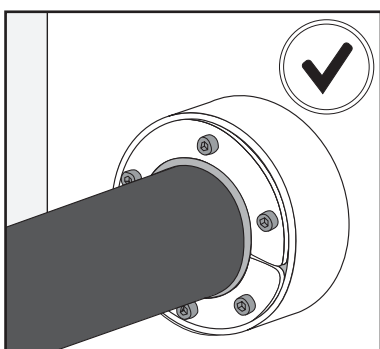
Check the inside diameter of the sleeve and the outside diameter of the cable/pipe to verify that it is within the range of selected HRST.



Check that the HRST is completely inserted in the Sleeve/Aperture.



Check that Hawke Lubricant has been used during the installation.



Check that all the bolts has been tightened similarly and do not exist gaps between the cable/pipe and the HRST.