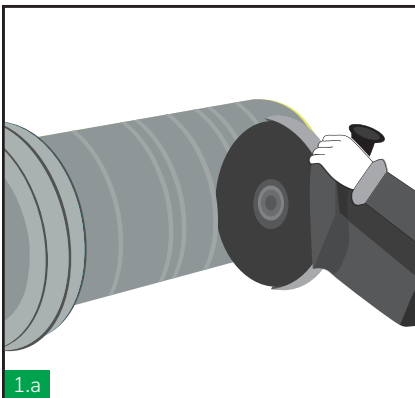
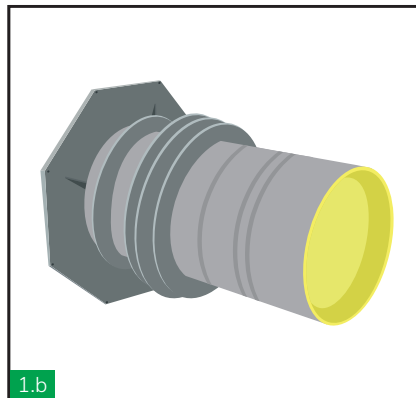
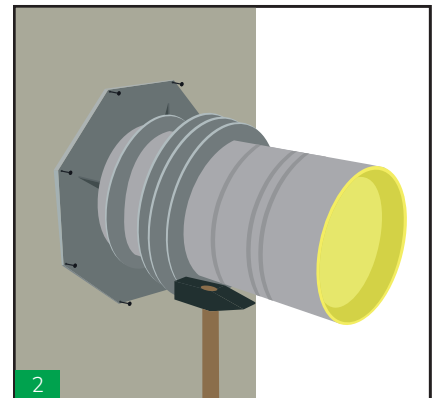


→ **CBP** Installation guide:


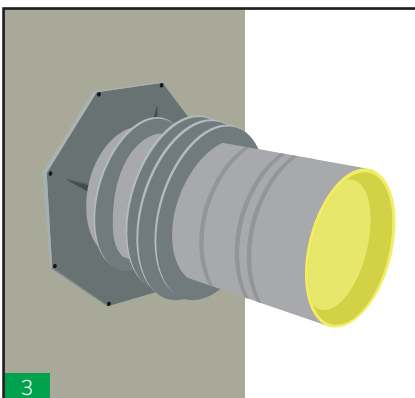
Cut the CBP wall sleeve in stock length (= 500mm) to the required component thickness using a suitable cutting tool.



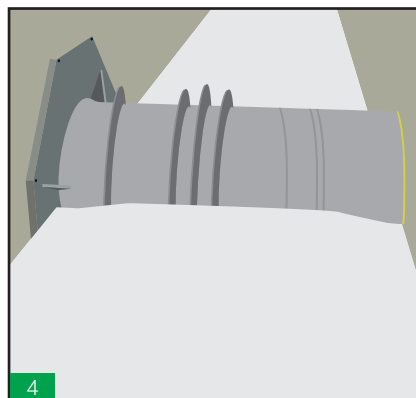
The wall sleeve can also be ordered with the desired wall thickness ex factory.



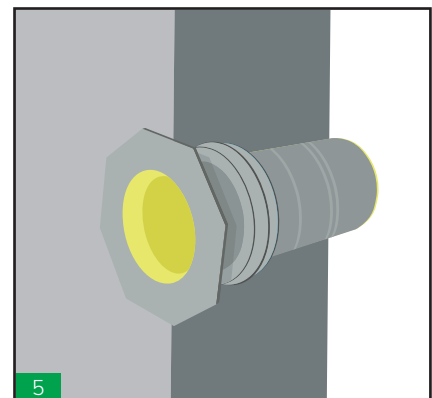
Nail the adjusted wall sleeve to the formwork through the corresponding nail holes on the flange. The supplied closure plugs remain in the wall sleeve. If used in a foundation, attach the wall sleeve to the reinforcement using binding wire and align it (again, used the provided nail holes.)



The wall sleeve is now installed and the wall formwork can be closed.



The wall is concreted. The monolithic triple seal provides reliable protection against water ingress.



The CBP wall sleeve is now cast into the wall. Further sealing can now be carried out, e.g. using a thick bitumen coating or HTS Blind Plugs/HRST/HBRT Sealing Systems.

 → **CBP wall sleeve**
Scope of delivery

- CBP wall sleeve
- 2 closure plugs per wall sleeve

General installation information

- The adhesive flange must be clean and free of dust and grease to ensure the proper application of surface seals such as thick bitumen coatings, sealing slurries, etc.
- The length of the wall sleeves can be adjusted on site.

Tools required for the correct installation of a CBP wall sleeve

- Measuring tool
- Cutting tool, e.g. angle grinder or saw
- Hammer with appropriate nails
- Binding wire for installation in the foundation