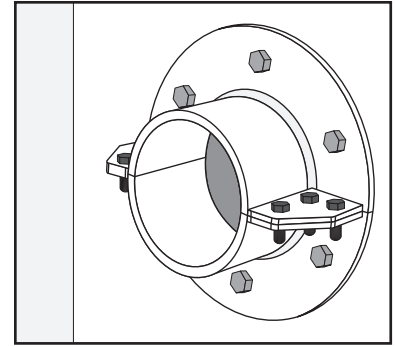
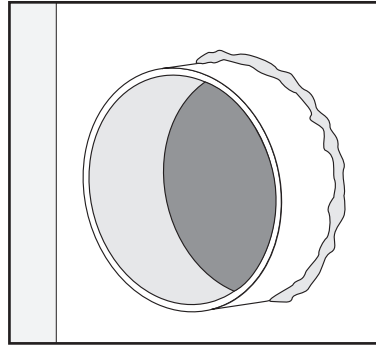


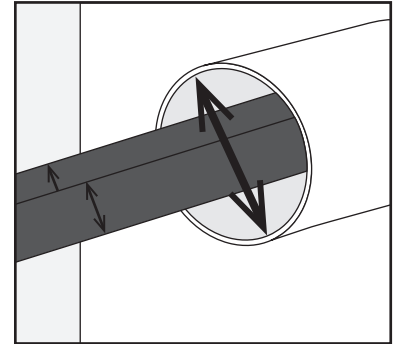
ROUND HRST MULTIHOLE

Installation and inspection checks guidelines:

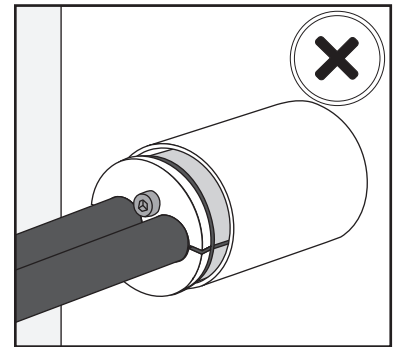
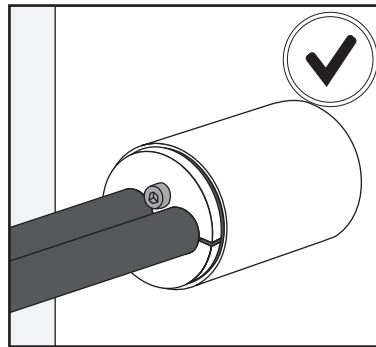
Check that HTS Sleeve has been used in the installation, that it has been properly installed (welded/bolted) and that it has not mechanical or corrosion damage.



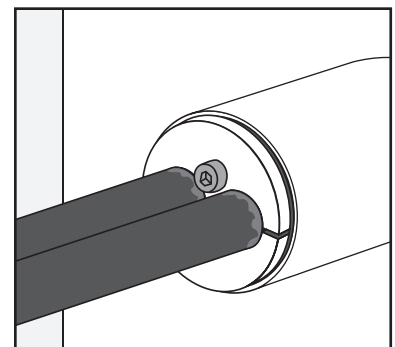
Check the inside diameter of the sleeve and the outside diameter of the cable/pipe to verify that it is within the range of selected HRST.



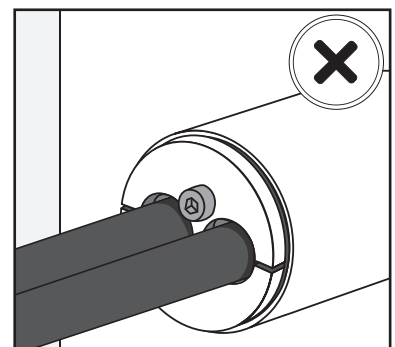
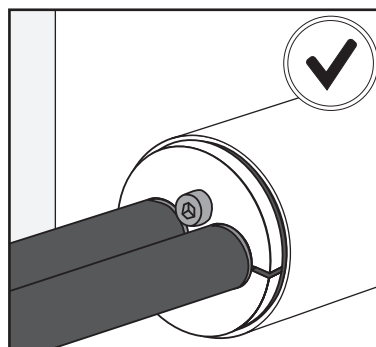
Check that the HRST is completely inserted in the Sleeve/Aperture.

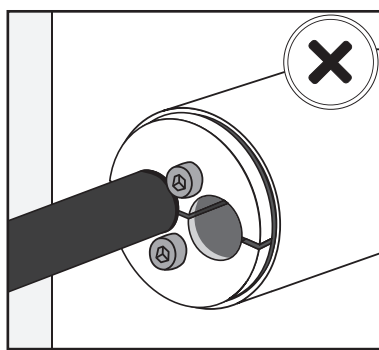
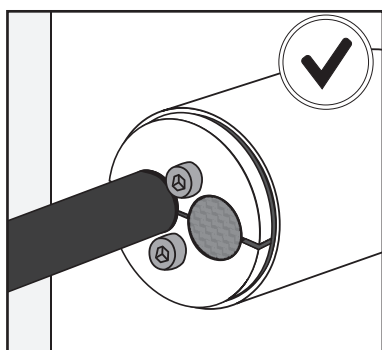


Check that HTS Lubricant has been used during the installation.



Check that all the bolts has been tightened similarly and do not exist gaps between the cable/pipe and the HRST.





Check that every not occupied HRST holes are plugged with HTS HRST plugs.