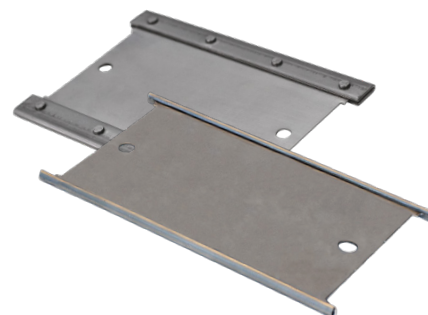


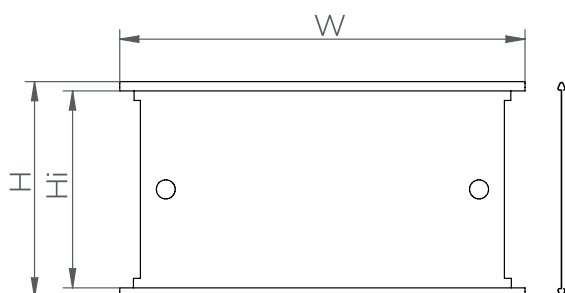
## STAYPLATES

Stayplates ensure the blocks in a HTS rectangular system (tolerant and blank ones) are fixed in position after compression. A stayplate should be placed above each complete row of insert/filler blocks. However, never on the last top row (underneath the compression plate) and never below the last bottom row of blocks.

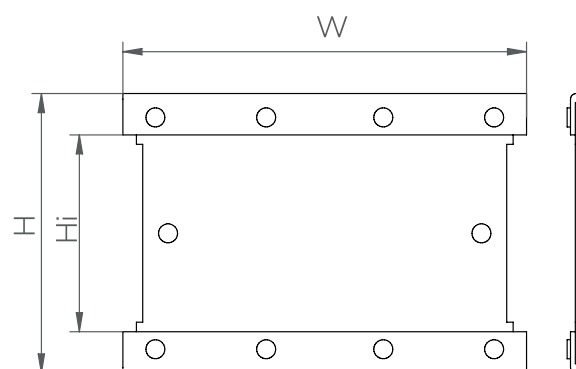


- Available in AISI 304 stainless steel. AISI 316 and other materials under request.
- High pressure stayplates (931P) are to be used in applications where the pressure requirement is greater than 3.5 bar.
- Ex available under request.

### HTS standard Stayplate



### HTS high pressure Stayplate



| DESCRIPTION                         | W (mm) | H (mm) | Hi (mm) |
|-------------------------------------|--------|--------|---------|
| Stayplate 931 60mm                  | 68     | 68     | 62      |
| Stayplate 931 120mm                 | 128    | 68     | 62      |
| High Pressure Stayplate 931/P 120mm | 128    | 88     | 62      |
| Stayplate 931 180mm                 | 188    | 68     | 62      |
| Stayplate 931 240mm                 | 248    | 68     | 62      |
| Stayplate 931 360mm                 | 368    | 68     | 62      |