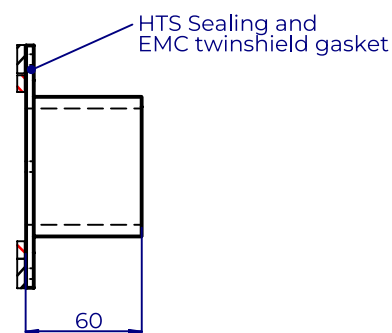
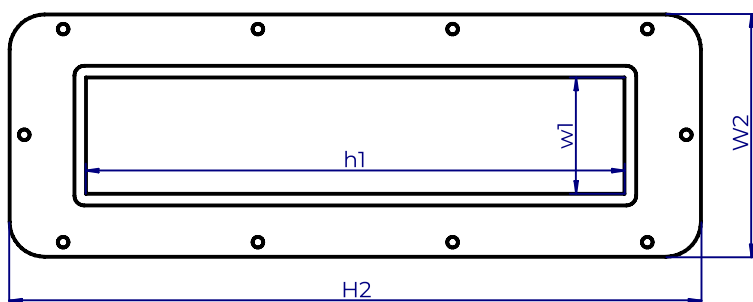


H-HC EMC

The H-HC frame is manufactured with flange. This flange can be placed centrally in the frame or offset on one side. Available in two different widths; 60 and 120 mm wide (internal).

CHARACTERISTICS

- To be installed (bolted) inside or outside the panels and cabinets.
- To be sealed with HTS HF EMC blocks and EMC compression systems, stayplates and lubricant to give a conductive path from the cable screen and the surface of the blocks to the earth.
- Material: stainless steel.
- Compression tool required for installation.
- Customizable flange and frame sizes (the latter according to our standard sizes)
- HTS Sealing+EMC can be installed on both sides of the flange, installation dependant.
- Ex available under request.



H-HC M+P	A	B	C
H-HC 1+1	60	101	101
H-HC 2+2	120	101	101
H-HC 3+1	60	159,5	101
H-HC 3+3	60	159,5	159,5
H-HC 4+2	120	159,5	101
H-HC 4+4	120	159,5	159,5
H-HC 5+1	60	218	101
H-HC 5+3	60	218	159,5
H-HC 5+5	60	218	218
H-HC 6+2	120	218	101
H-HC 6+4	120	218	159,5
H-HC 6+6	120	218	218
H-HC 7+1	60	276,5	101
H-HC 7+3	60	276,5	159,5
H-HC 7+5	60	276,5	218
H-HC 7+7	60	276,5	276,5
H-HC 8+2	120	276,5	101
H-HC 8+4	120	276,5	159,5
H-HC 8+6	120	276,5	218
H-HC 8+8	120	276,5	276,5

H-HC M	A	B
H-HC 1	60	101
H-HC 2	120	101
H-HC 3	60	159,5
H-HC 4	120	159,5
H-HC 5	60	218
H-HC 6	120	218
H-HC 7	60	276,5
H-HC 8	120	276,5