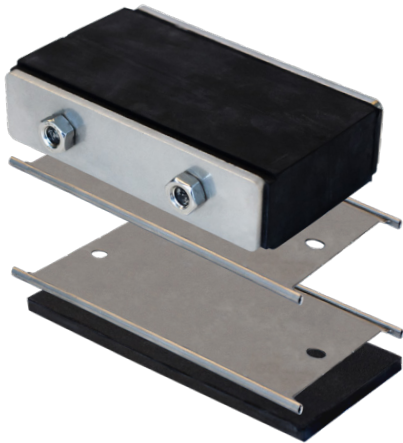
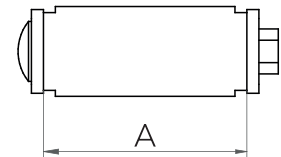
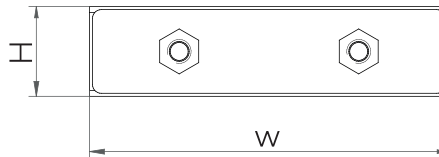


# CSDM Compression kit



HTS CSDM Compression system is used in H-DM frames to compress and seal the installation of cables and DM modules. It includes the endpacker unit, 5mm filler strip and two stayplates. The 5mm filler strip can be installed as either the top or bottom row of blocks within a H-DM aperture.

The extra 5mm strip is recommended to be placed on the bottom row of the frame, along with one of the stayplates.

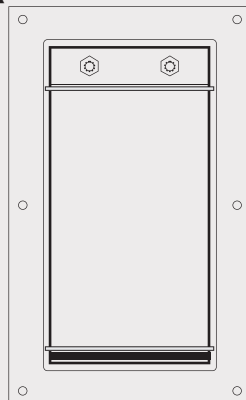


	Description	Qty	W(mm)	H (mm)	A (mm)	Weight(Kg)
CSDM-120/S compression kit	DM – Endpacker	1	120	30	68	0,6
	DM50	1	120	5	60	0,2
	Stayplate	2	-	-	-	-
CSDM-120/S compression kit	DM – Endpacker 60mm	1	60	30	68	0,3
	DM50 60mm	1	60	5	60	0,01
	Stayplate 60mm	2	-	-	-	-

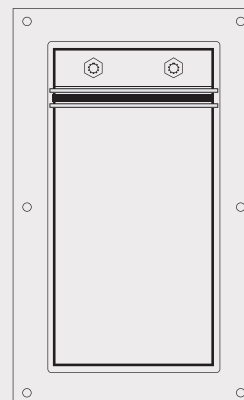
\*All dimensions are nominal values

## Installation Options

### Option 1 (recommended)



### Option 2



- ◆ Option 1 (recommended): Endpacker and stayplate located in upper end of the frame. Dm50 compensation module located on the bottom end, with a stayplate over it (never between module and frame).
- ◆ Option 2 (recommended): Endpacker and stayplate located in upper end of the frame. Dm50 compensation module located on the bottom end, with a stayplate over it (never between module and frame).