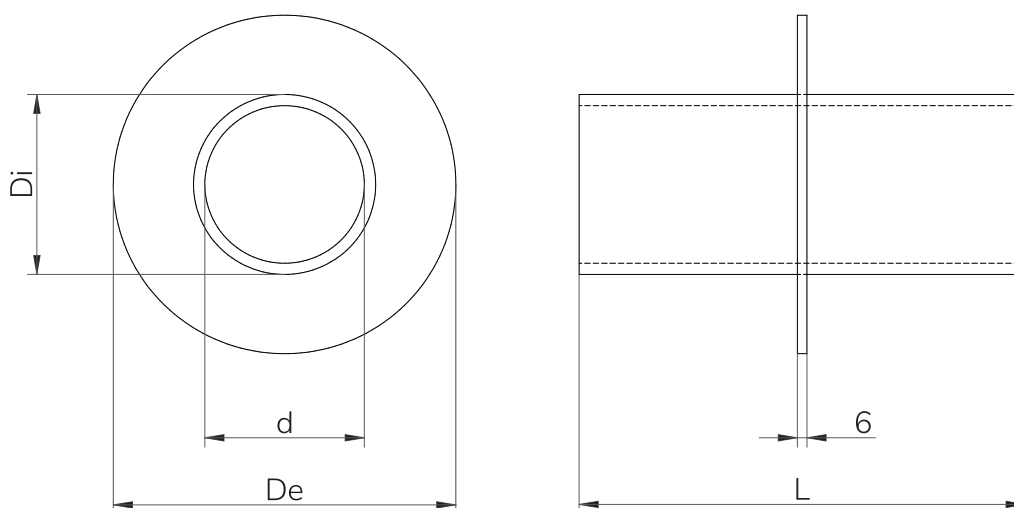


CBC Sleeve

Sleeve with flange for HTS Round transits.

CHARACTERISTICS

- Designed to be casted.
- Materials: Mild Steel, Stainless Steel and Aluminium.
- To be sealed with standard or EMC HRT/HRTO and HRST.



Mild Steel

DESCRIPTION	d (mm)	Di (mm)	De (mm)	L (mm)	MIN WEIGHT (kg)
MS CBC-30	30	42	90	min 80	0,6
MS CBC-40	40	50	100	min 80	0,7
MS CBC-50	50	60	110	min 80	0,8
MS CBC-70	70	80	130	min 80	1,3
MS CBC-100	100	110	215	min 80	2,8
MS CBC-125	125	140	240	min 80	3,4
MS CBC-150	150	171	270	min 80	4,8
MS CBC-175	175	194	-	min 80	-
MS CBC-200	200	220	320	min 80	6,2

*Lenght (L) on demand in purchase order, minimum 80mm

**Weight indicated for minimum lenght of 80mm

**All dimensions are nominal values

Stainless Steel

DESCRIPTION	d (mm)	Di (mm)	De (mm)	L (mm)	MIN WEIGHT (kg)
SS CBC-30	34	42	90	min 80	0,6
SS CBC-40	40	50	100	min 80	0,7
SS CBC-50	50	60	110	min 80	0,9
SS CBC-70	70	89	130	min 80	1,3
SS CBC-100	100	114	215	min 80	2,9
SS CBC-125	125	141	240	min 80	3,5
SS CBC-150	150	168	270	min 80	5,0
SS CBC-175	175	-	-	min 80	-
SS CBC-200	200	220	320	min 80	6,3

*Length (L) on demand in purchase order, minimum 80mm

**Weight indicated for minimum length of 80mm

**All dimensions are nominal values

Installation references

	pag
See assembly parts	69
See round frame HRT0	52
See round frame HRST	54
See accessories	79
See installation guide	127
See welding instructions	166
See inspection check	174