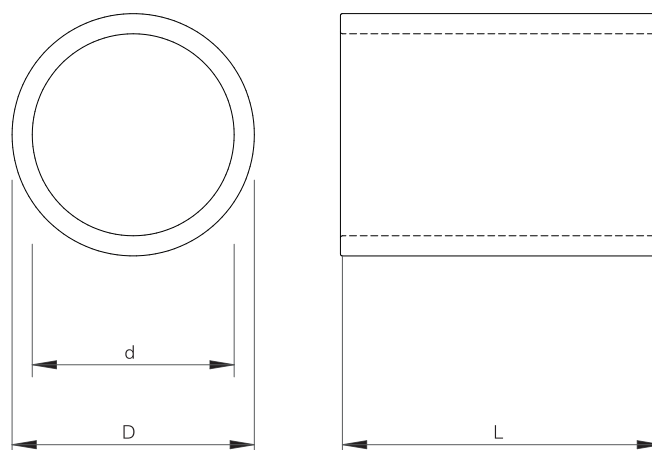


C Marine Sleeve

Sleeve without flange for HTS Round transits.

CHARACTERISTICS

- Designed to be welded.
- Materials: Mild Steel, Stainless Steel and Aluminium
- To be sealed with standard or EMC HRT/HRTO and HRST.
- Ex available under request.



Mild Steel

DESCRIPTION	d (mm)	D (mm)	L (mm)	WEIGHT(kg)
MS C -30 L=80	34	42	80	0,3
MS C -40 L=80	40	50	80	0,4
MS C -50 L=80	50	60	80	0,5
MS C -70 L=80	70	80	80	0,7
MS C -100 L=80	100	110	80	1,0
MS C -125 L=80	125	140	80	2,0
MS C -150 L=80	150	171	80	3,3
MS C -175 L=80	175	193,7	80	3,4
MS C -200 L=80	200	220	80	4,1

****All dimensions are nominal values**

Stainless steel

DESCRIPTION	d (mm)	D (mm)	L (mm)	WEIGHT(kg)
SS C-30 L=80	33	42	80	0,3
SS C-40 L=80	40	50	80	0,4
SS C-50 L=80	50	60,3	80	0,6
SS C-70 L=80	70	88,9	80	1,5
SS C-100 L=80	100	114,3	80	1,5
SS C-125 L=80	125	141,3	80	2,2
SS C-150 L=80	150	168,3	80	2,9
SS C-175 L=80	175	-	80	-
SS C-200 L=80	200	220	80	4,2

**All dimensions are nominal values

Aluminium

DESCRIPTION	d (mm)	D (mm)	L (mm)	WEIGHT(kg)
AL C-30 L=80	33	45	80	0,2
AL C-40 L=80	40	50	80	0,2
AL C-50 L=80	50	60	80	0,2
AL C-70 L=80	70	80	80	0,3
AL C-100 L=80	100	110	80	0,4
AL C-125 L=80	125	135	80	0,4
AL C-150 L=80	150	170	80	1,1
AL C-175 L=80	175	190	80	0,9
AL C-200 L=80	200	220	80	1,4

**All dimensions are nominal values

Installation references

	pag
See assembly parts	69
See round frame HRT0	52
See round frame HRST	54
See accessories	79
See installation guide	127
See welding instructions	166
See inspection check	174