





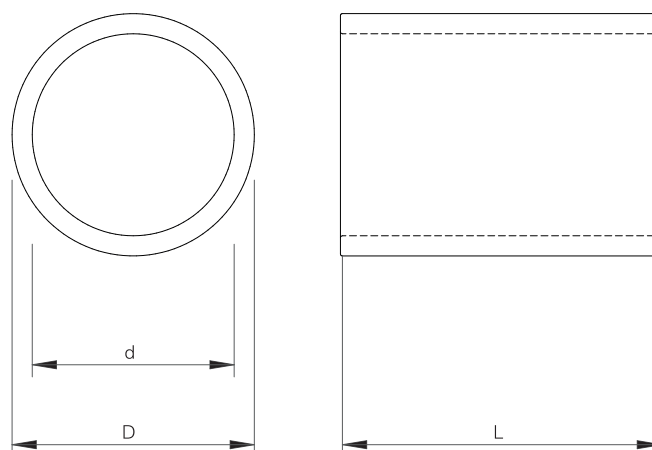
SLEEVES

C Marine Sleeve

Sleeve without flange for HTS Round transits.

CHARACTERISTICS

- Designed to be welded.
- Materials: Mild Steel, Stainless Steel and Aluminium
- To be sealed with standard or EMC HRT/HRTO and HRST.
- Ex available under request.



Mild Steel

| DESCRIPTION | d (mm) | D (mm) | L (mm) | WEIGHT(kg) |
|----------------|--------|--------|--------|------------|
| MS C -30 L=80 | 34 | 42 | 80 | 0,3 |
| MS C -40 L=80 | 40 | 50 | 80 | 0,4 |
| MS C -50 L=80 | 50 | 60 | 80 | 0,5 |
| MS C -70 L=80 | 70 | 80 | 80 | 0,7 |
| MS C -100 L=80 | 100 | 110 | 80 | 1,0 |
| MS C -125 L=80 | 125 | 140 | 80 | 2,0 |
| MS C -150 L=80 | 150 | 171 | 80 | 3,3 |
| MS C -175 L=80 | 175 | 193,7 | 80 | 3,4 |
| MS C -200 L=80 | 200 | 220 | 80 | 4,1 |

**All dimensions are nominal values

Stainless steel

| DESCRIPTION | d (mm) | D (mm) | L (mm) | WEIGHT(kg) |
|---------------|--------|--------|--------|------------|
| SS C-30 L=80 | 33 | 42 | 80 | 0,3 |
| SS C-40 L=80 | 40 | 50 | 80 | 0,4 |
| SS C-50 L=80 | 50 | 60,3 | 80 | 0,6 |
| SS C-70 L=80 | 70 | 88,9 | 80 | 1,5 |
| SS C-100 L=80 | 100 | 114,3 | 80 | 1,5 |
| SS C-125 L=80 | 125 | 141,3 | 80 | 2,2 |
| SS C-150 L=80 | 150 | 168,3 | 80 | 2,9 |
| SS C-175 L=80 | 175 | - | 80 | - |
| SS C-200 L=80 | 200 | 220 | 80 | 4,2 |

**All dimensions are nominal values

Aluminium

| DESCRIPTION | d (mm) | D (mm) | L (mm) | WEIGHT(kg) |
|---------------|--------|--------|--------|------------|
| AL C-30 L=80 | 33 | 45 | 80 | 0,2 |
| AL C-40 L=80 | 40 | 50 | 80 | 0,2 |
| AL C-50 L=80 | 50 | 60 | 80 | 0,2 |
| AL C-70 L=80 | 70 | 80 | 80 | 0,3 |
| AL C-100 L=80 | 100 | 110 | 80 | 0,4 |
| AL C-125 L=80 | 125 | 135 | 80 | 0,4 |
| AL C-150 L=80 | 150 | 170 | 80 | 1,1 |
| AL C-175 L=80 | 175 | 190 | 80 | 0,9 |
| AL C-200 L=80 | 200 | 220 | 80 | 1,4 |

**All dimensions are nominal values

Installation references

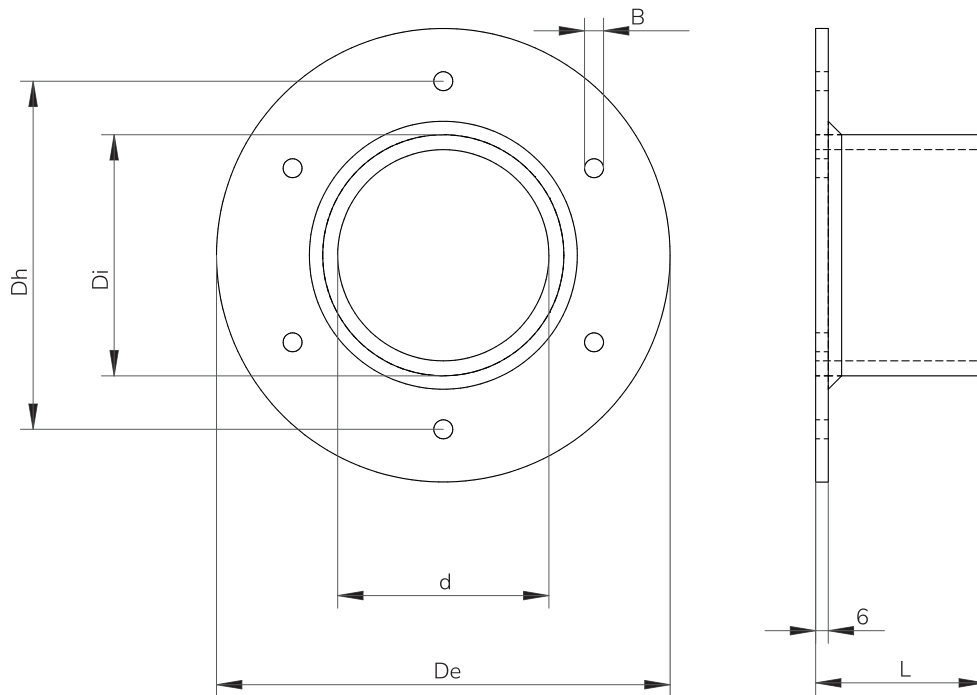
| | pag |
|--------------------------|-----|
| See assembly parts | 69 |
| See round frame HRTO | 52 |
| See round frame HRST | 54 |
| See accessories | 79 |
| See installation guide | 127 |
| See welding instructions | 166 |
| See inspection check | 174 |

CB Sleeve

Sleeves with flange for HTS Round transits.

CHARACTERISTICS

- Designed to be bolted or casted
- Materials: Mild Steel, Stainless Steel and Aluminium
- To be sealed with standard or EMC HRT/HRTO and HRST.
- Ex available under request.



Mild Steel

| DESCRIPTION | d (mm) | Di (mm) | De (mm) | Dh (mm) | L (mm) | B (mm) | HOLES | WEIGHT(kg) |
|-------------|--------|---------|---------|---------|--------|--------|-------|------------|
| MS CB-30 | 30 | 42 | 90 | 70 | 80 | 9 | 4 | 0,6 |
| MS CB-40 | 40 | 50 | 100 | 80 | 80 | 9 | 4 | 0,7 |
| MS CB-50 | 50 | 60 | 110 | 90 | 80 | 9 | 4 | 0,8 |
| MS CB-70 | 70 | 80 | 130 | 110 | 80 | 9 | 4 | 1,3 |
| MS CB-100 | 100 | 110 | 215 | 165 | 80 | 9 | 6 | 2,8 |
| MS CB-125 | 125 | 140 | 240 | 190 | 80 | 9 | 6 | 3,4 |
| MS CB-150 | 150 | 171 | 270 | 220 | 80 | 11 | 6 | 4,8 |
| MS CB-175 | 175 | 194 | - | - | 80 | 11 | - | - |
| MS CB-200 | 200 | 220 | 320 | 270 | 80 | | 6 | 6,2 |

Stainless Steel

| DESCRIPTION | d (mm) | Di (mm) | De (mm) | Dh (mm) | L (mm) | B (mm) | HOLES | WEIGHT(kg) |
|-------------|--------|---------|---------|---------|--------|--------|-------|------------|
| SS CB-30 | 34 | 42 | 90 | 70 | 80 | 9 | 4 | 0,6 |
| SS CB-40 | 40 | 50 | 100 | 80 | 80 | 9 | 4 | 0,7 |
| SS CB-50 | 50 | 60 | 110 | 90 | 80 | 9 | 4 | 0,9 |
| SS CB-70 | 70 | 89 | 130 | 110 | 80 | 9 | 4 | 1,3 |
| SS CB-100 | 100 | 114 | 215 | 165 | 80 | 9 | 6 | 2,9 |
| SS CB-125 | 125 | 141 | 240 | 190 | 80 | 9 | 6 | 3,5 |
| SS CB-150 | 150 | 168 | 270 | 220 | 80 | 11 | 6 | 5,0 |
| SS CB-175 | 175 | - | - | - | 80 | - | - | - |
| SS CB-200 | 200 | 220 | 320 | 270 | 80 | 11 | 6 | 6,3 |

Installation references

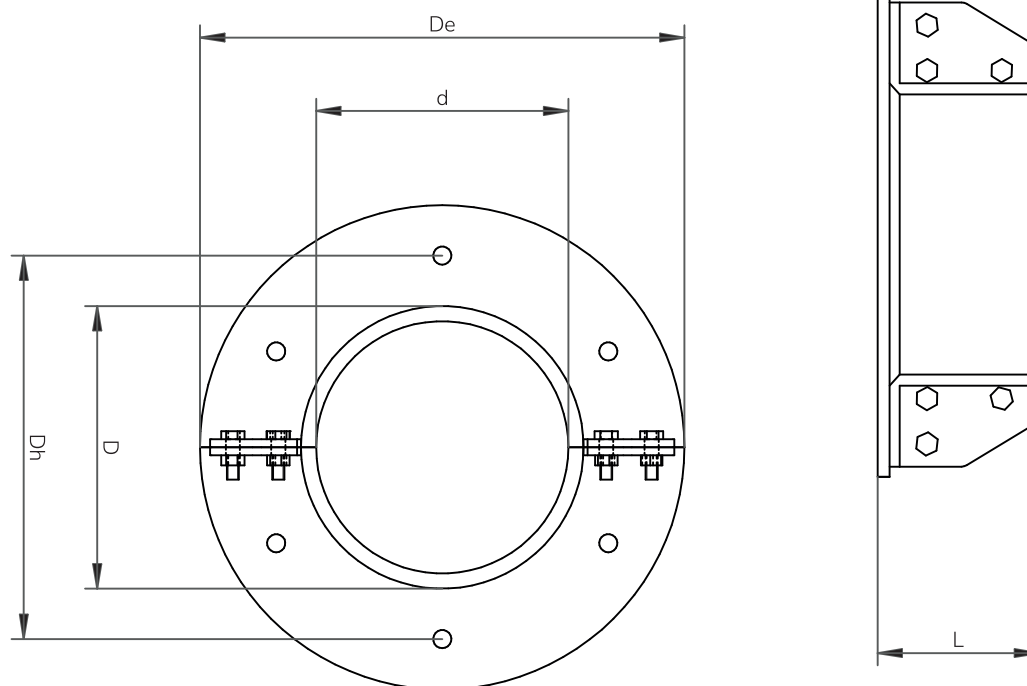
| | pag |
|--------------------------|-----|
| See assembly parts | 69 |
| See round frame HRT0 | 52 |
| See round frame HRST | 54 |
| See accessories | 79 |
| See installation guide | 127 |
| See welding instructions | 166 |
| See inspection check | 174 |

CBO Sleeve

Sleeve with flange and removable end which allows installation around existing cables.
To be used with HTS Round transits.

CHARACTERISTICS

- Designed to be bolted or casted
- Materials: Mild Steel, Stainless Steel and Aluminium
- To be sealed with standard or EMC HRT/HRTO and HRST.
- Ex available under request.



Mild steel

| DESCRIPTION | d (mm) | Di (mm) | De (mm) | Dh (mm) | L (mm) | B (mm) | HOLES | WEIGHT (kg) |
|-------------|--------|---------|---------|---------|--------|--------|-------|-------------|
| MS CBO-30 | 30 | 42 | 90 | 70 | 80 | 9 | 4 | 0,8 |
| MS CBO-40 | 40 | 51 | 100 | 80 | 80 | 9 | 4 | 0,9 |
| MS CBO-50 | 50 | 60,3 | 110 | 90 | 80 | 9 | 4 | 1,0 |
| MS CBO-70 | 70 | 82,5 | 130 | 110 | 80 | 9 | 4 | 1,5 |
| MS CBO-100 | 100 | 114,3 | 215 | 165 | 80 | 9 | 6 | 3,1 |
| MS CBO-125 | 125 | 140 | 240 | 190 | 80 | 9 | 6 | 3,7 |
| MS CBO-150 | 150 | 171 | 270 | 220 | 80 | 11 | 6 | 5,1 |
| MS CBO-175 | 175 | - | - | - | 80 | - | - | - |
| MS CBO-200 | 200 | 219,1 | 320 | 270 | 80 | 11 | 6 | 6,4 |

Stainless steel

| DESCRIPTION | d (mm) | Di (mm) | De (mm) | Dh (mm) | L (mm) | B (mm) | HOLES | WEIGHT(kg) |
|-------------|--------|---------|---------|---------|--------|--------|-------|------------|
| SS CBO-30 | 30 | 42,2 | 90 | 70 | 80 | 9 | 4 | 0,8 |
| SS CBO-40 | 40 | 50 | 100 | 80 | 80 | 9 | 4 | 0,9 |
| SS CBO-50 | 50 | 60,3 | 110 | 90 | 80 | 9 | 4 | 1,1 |
| SS CBO-70 | 70 | 88,9 | 135 | 110 | 80 | 9 | 4 | 1,5 |
| SS CBO-100 | 100 | 114,3 | 215 | 165 | 80 | 9 | 6 | 3,1 |
| SS CBO-125 | 125 | 140 | 240 | 190 | 80 | 9 | 6 | 3,8 |
| SS CBO-150 | 150 | 168,3 | 270 | 220 | 80 | 11 | 6 | 5,2 |
| SS CBO-175 | 175 | - | - | - | 80 | - | - | - |
| SS CBO-200 | 200 | 219,1 | 320 | 270 | 80 | 11 | 6 | 6,6 |

**All dimensions are nominal values

Installation references

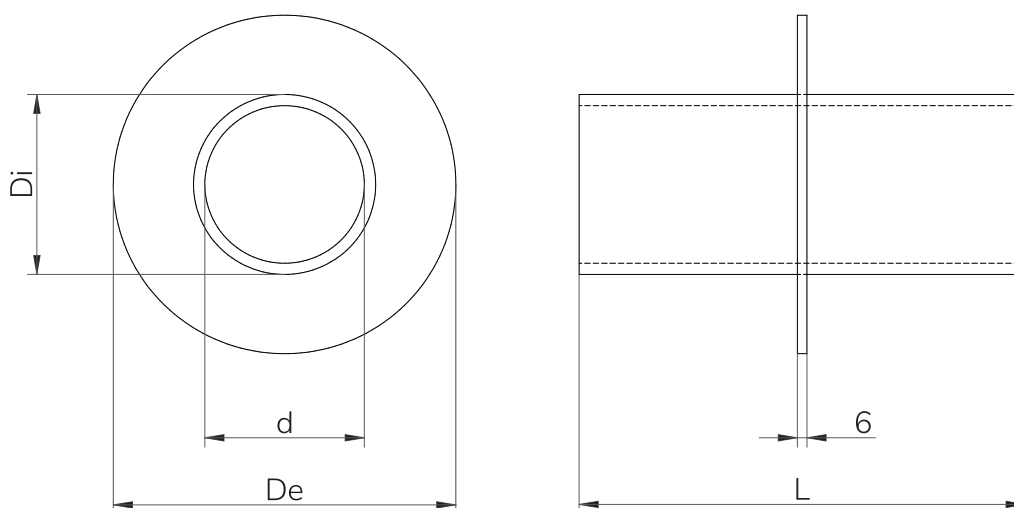
| | pag |
|--------------------------|-----|
| See assembly parts | 69 |
| See round frame HRT0 | 52 |
| See round frame HRST | 54 |
| See accessories | 79 |
| See installation guide | 127 |
| See welding instructions | 166 |
| See inspection check | 174 |

CBC Sleeve

Sleeve with flange for HTS Round transits.

CHARACTERISTICS

- Designed to be casted.
- Materials: Mild Steel, Stainless Steel and Aluminium.
- To be sealed with standard or EMC HRT/HRTO and HRST.



Mild Steel

| DESCRIPTION | d (mm) | Di (mm) | De (mm) | L (mm) | MIN WEIGHT (kg) |
|-------------|--------|---------|---------|--------|-----------------|
| MS CBC-30 | 30 | 42 | 90 | min 80 | 0,6 |
| MS CBC-40 | 40 | 50 | 100 | min 80 | 0,7 |
| MS CBC-50 | 50 | 60 | 110 | min 80 | 0,8 |
| MS CBC-70 | 70 | 80 | 130 | min 80 | 1,3 |
| MS CBC-100 | 100 | 110 | 215 | min 80 | 2,8 |
| MS CBC-125 | 125 | 140 | 240 | min 80 | 3,4 |
| MS CBC-150 | 150 | 171 | 270 | min 80 | 4,8 |
| MS CBC-175 | 175 | 194 | - | min 80 | - |
| MS CBC-200 | 200 | 220 | 320 | min 80 | 6,2 |

*Lenght (L) on demand in purchase order, minimum 80mm

**Weight indicated for minimum lenght of 80mm

**All dimensions are nominal values

Stainless Steel

| DESCRIPTION | d (mm) | Di (mm) | De (mm) | L (mm) | MIN WEIGHT (kg) |
|-------------|--------|---------|---------|--------|-----------------|
| SS CBC-30 | 34 | 42 | 90 | min 80 | 0,6 |
| SS CBC-40 | 40 | 50 | 100 | min 80 | 0,7 |
| SS CBC-50 | 50 | 60 | 110 | min 80 | 0,9 |
| SS CBC-70 | 70 | 89 | 130 | min 80 | 1,3 |
| SS CBC-100 | 100 | 114 | 215 | min 80 | 2,9 |
| SS CBC-125 | 125 | 141 | 240 | min 80 | 3,5 |
| SS CBC-150 | 150 | 168 | 270 | min 80 | 5,0 |
| SS CBC-175 | 175 | - | - | min 80 | - |
| SS CBC-200 | 200 | 220 | 320 | min 80 | 6,3 |

*Lenght (L) on demand in purchase order, minimum 80mm

**Weight indicated for minimum lenght of 80mm

**All dimensions are nominal values

Installation references

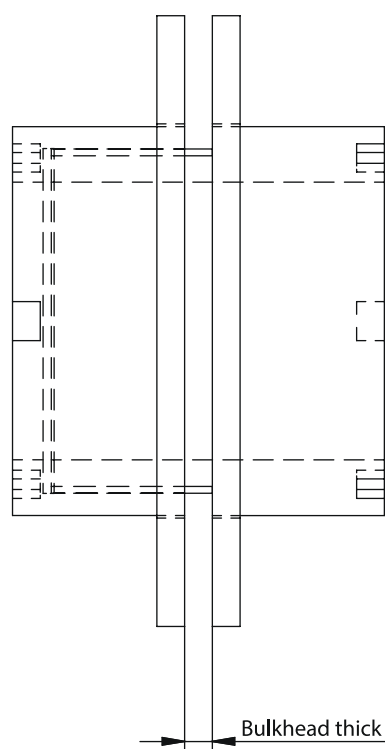
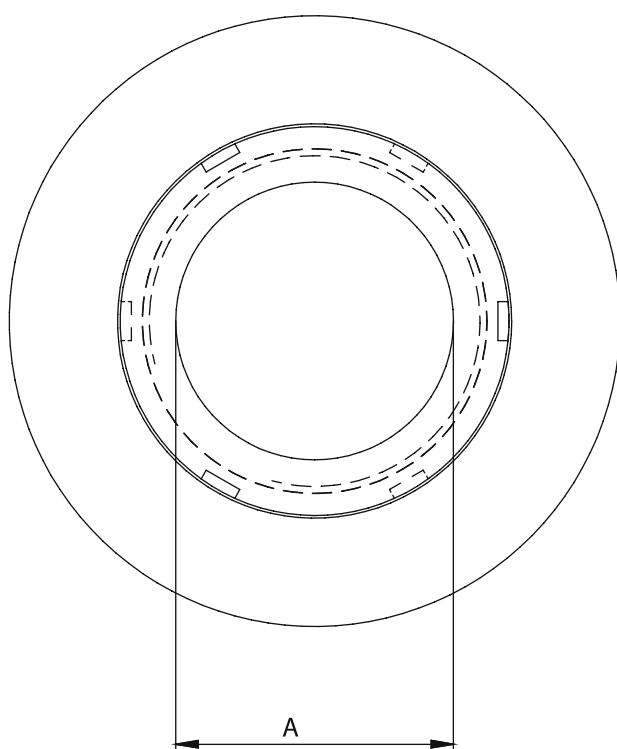
| | pag |
|--------------------------|-----|
| See assembly parts | 69 |
| See round frame HRT0 | 52 |
| See round frame HRST | 54 |
| See accessories | 79 |
| See installation guide | 127 |
| See welding instructions | 166 |
| See inspection check | 174 |

CBT Sleeve

Two piece sleeve with flanges, secured by threading.

CHARACTERISTICS

- Two piece version; adaptable to different bulkhead thicknesses.
- Material: Mild steel.
- Required accessories: HTS fire resistant silicone.
- No welding is needed.



| DESCRIPTION | A (mm) | SUITABLE FOR |
|-------------|--------|-----------------|
| CBT-50 | 50 | HRST-50 Series |
| CBT-70 | 70 | HRST-70 Series |
| CBT-100 | 100 | HRST-100 Series |
| CBT-125 | 125 | HRST-125 Series |
| CBT-150 | 150 | HRST-150 Series |
| CBT-175 | 175 | HRST-175 Series |
| CBT-200 | 200 | HRST-200 Series |

Installation references

| | page |
|------------------------|------|
| See round frame HRST | 54 |
| See accessories | 79 |
| See installation guide | 127 |
| See inspection check | 180 |