



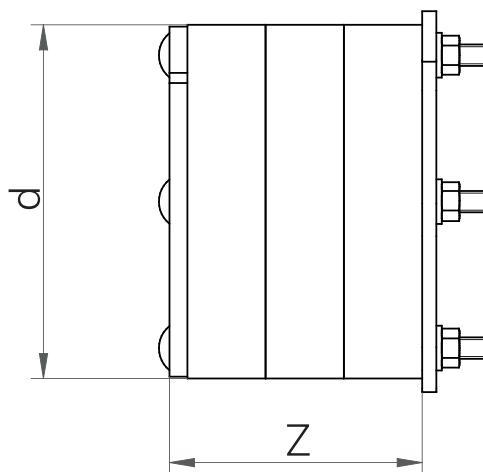
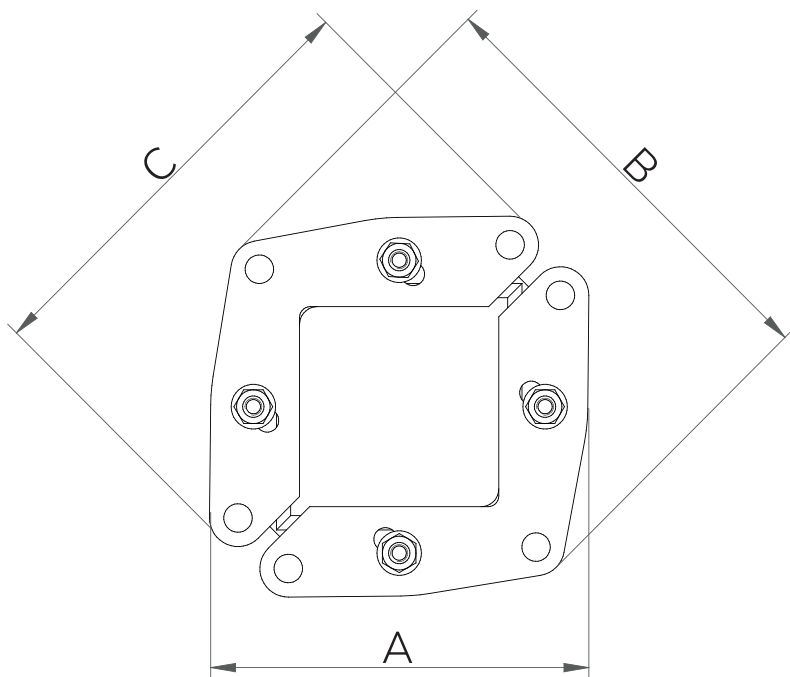
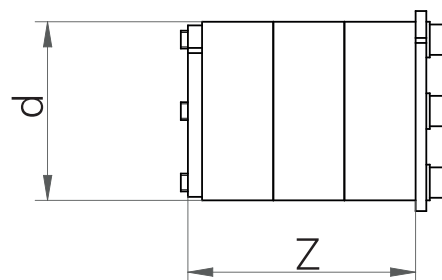
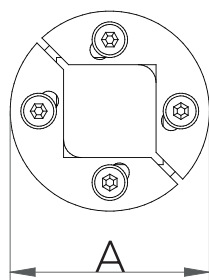
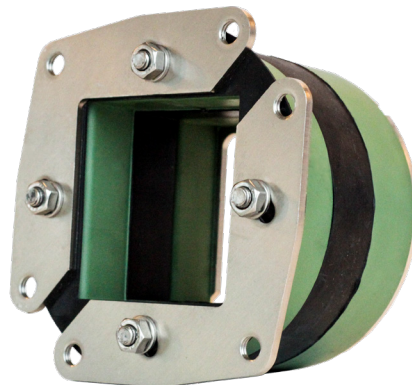
ROUND TRANSIT SYSTEM

HRTO Family

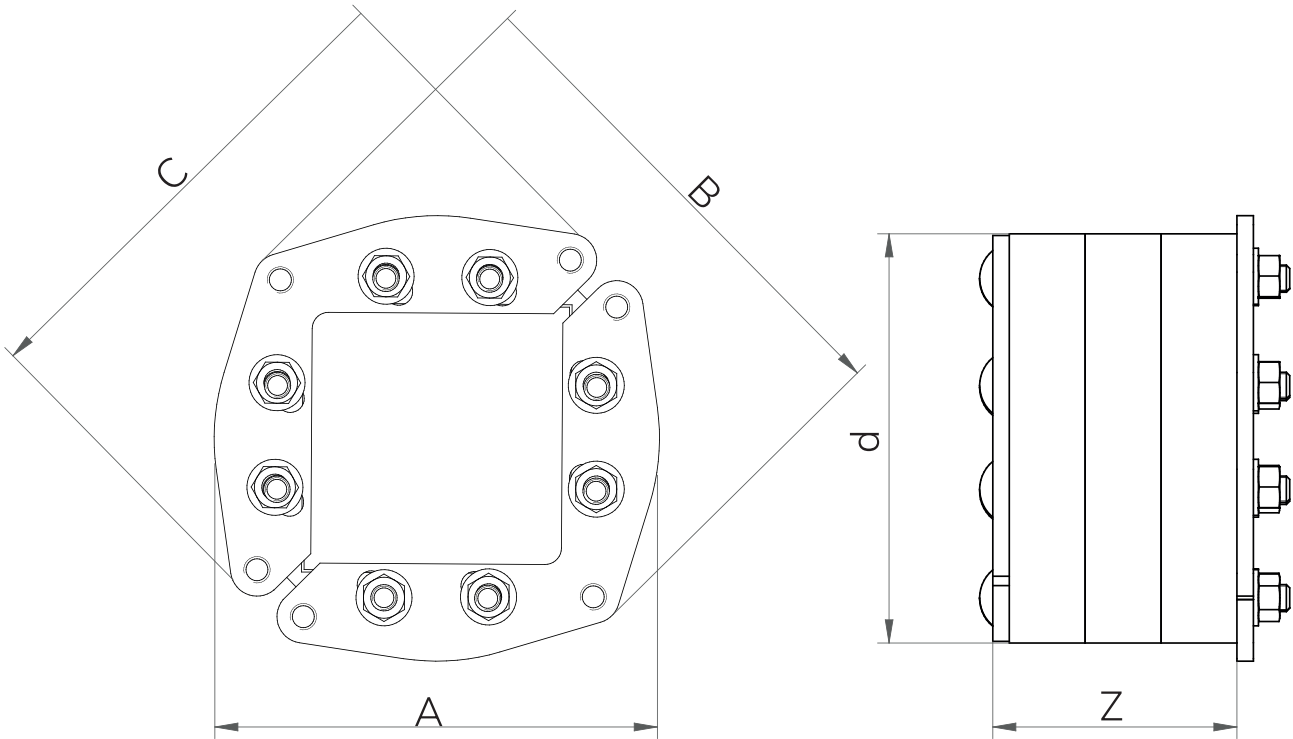
HTS HRTO is a round sealing solution for multiple cables/pipes passing through a circular aperture in a wall or bulkhead/deck. The seal is formed by tightening the compression bolts which expand the system radially with no need of a compression system.

CHARACTERISTICS

- Designed to be installed using HTS Sleeves (welded, bolted or casted) and standard HF blocks.
- Manufactured in intumescent elastomer polymer with stainless steel front and back plates. Plates also available in mild steel.
- HRTO is always supplied as an open frame. This enables the frame to be installed after cable/pipe installation.
- No extra tools are required for its installation.
- Ex available under request.

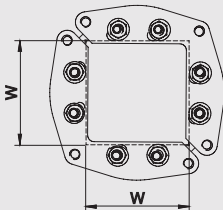


HRTO Family



| DESCRIPTION | SLEEVE SIZE NEEDED | A (mm) | B (mm) | C (mm) | d (mm) | Z (mm) | Weigth (Kg) |
|-------------|--------------------|--------|--------|--------|--------|--------|-------------|
| HRTO-30 | 30 | 36 | - | - | 32 | 64 | 0,11 |
| HRTO-40 | 40 | 46 | - | - | 40 | 64 | 0,15 |
| HRTO-50 | 50 | 56 | - | - | 50 | 64 | 0,2 |
| HRTO-70 | 70 | 85 | 105 | 50 | 70 | 70 | 0,5 |
| HRTO-100 | 100 | 108 | 137 | 94 | 100 | 70 | 0,8 |
| HRTO-125 | 125 | 150 | 163 | 124 | 125 | 74 | 0,95 |
| HRTO-150 | 150 | 160 | 187 | 179 | 150 | 74 | 1,9 |
| HRTO-200 | 200 | 210 | 237 | 226 | 200 | 74 | 3,7 |

→ Sealing Area



| TYPE | SEALING AREA (mm) |
|----------|-------------------|
| HRTO-30 | 15x15 |
| HRTO-40 | 20x20 |
| HRTO-50 | 30x30 |
| HRTO-70 | 40x40 |
| HRTO-100 | 60x60 |
| HRTO-125 | 80x80 |
| HRTO-150 | 90x90 |
| HRTO-200 | 120x120 |

→ Installation references

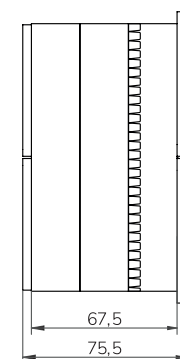
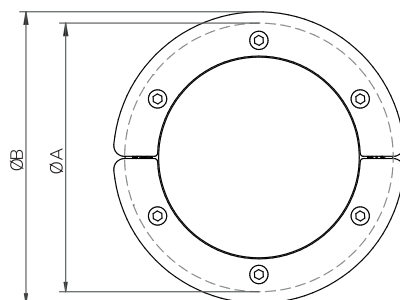
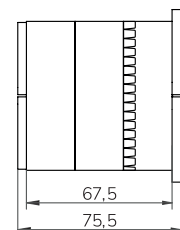
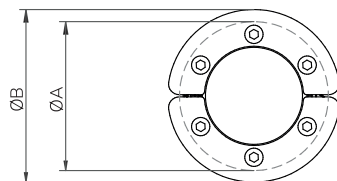
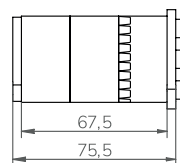
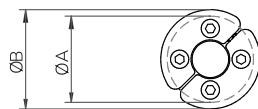
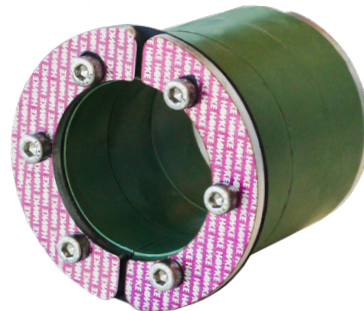
| | |
|------------------------|-----|
| See assembly parts | 69 |
| See accessories | 79 |
| See installation guide | 127 |
| See inspection check | 172 |

HRST Family

HTS HRST is a round sealing solution for a single cable/pipe passing through a wall or bulkhead/deck. Each size of HRST frame can seal a large range of diameters without any onsite modifications.

CHARACTERISTICS

- Available to seal services from 4mm up to 170mm of external diameter (standard version).
- Tolerant up to 7 mm.
- Designed to be installed using HTS Sleeves (welded, bolted or casted)
- Manufactured in intumescent elastomer polymer with stainless steel front and back plates. Each HRST frame has a gasket to prevent galvanic corrosion when installed within a mild steel sleeve.
- HRST is always supplied as an open frame. This enables the frame to be installed after cable/pipe installation.
- No extra tools are required for its installation.
- Ex available under request.



HRST Family

| Description | Sleeve size needed | Sealing from (mm) | Sealing to | A (mm) | B (mm) | Weight (kg) | Color |
|--------------|--------------------|-------------------|------------|--------|--------|-------------|--------|
| HRST-30/4 | 30 | 4 | 10 | 32 | 36 | 0,16 | White |
| HRST-30/7 | 30 | 7 | 14 | 32 | 36 | 0,15 | Red |
| HRST-30/10 | 30 | 10 | 17 | 32 | 36 | 0,14 | Blue |
| HRST-40/4 | 40 | 4 | 10 | 40 | 46 | 0,24 | Purple |
| HRST-40/7 | 40 | 7 | 14 | 40 | 46 | 0,23 | Yellow |
| HRST-40/10 | 40 | 10 | 17 | 40 | 46 | 0,21 | Green |
| HRST-40/17 | 40 | 17 | 24 | 40 | 46 | 0,18 | Pink |
| HRST-50/4 | 50 | 4 | 10 | 50 | 56 | 0,35 | Red |
| HRST-50/10 | 50 | 10 | 17 | 50 | 56 | 0,33 | White |
| HRST-50/17 | 50 | 17 | 24 | 50 | 56 | 0,29 | Blue |
| HRST-50/24 | 50 | 24 | 30 | 50 | 56 | 0,25 | Orange |
| HRST-70/26 | 70 | 26 | 33 | 69 | 80 | 0,56 | Purple |
| HRST-70/33 | 70 | 33 | 39 | 69 | 80 | 0,50 | Yellow |
| HRST-70/39 | 70 | 39 | 45 | 69 | 80 | 0,44 | Green |
| HRST-70/45 | 70 | 45 | 50 | 69 | 80 | 0,38 | Pink |
| HRST-100/48 | 100 | 48 | 55 | 99 | 110 | 0,96 | Red |
| HRST-100/55 | 100 | 55 | 61 | 99 | 110 | 0,87 | White |
| HRST-100/61 | 100 | 61 | 66 | 99 | 110 | 0,79 | Blue |
| HRST-100/66 | 100 | 66 | 71 | 99 | 110 | 0,71 | Orange |
| HRST-125/64 | 125 | 64 | 71 | 124 | 135 | 1,42 | Purple |
| HRST-125/71 | 125 | 71 | 79 | 124 | 135 | 1,27 | Yellow |
| HRST-125/79 | 125 | 79 | 86 | 124 | 135 | 1,12 | Green |
| HRST-125/86 | 125 | 86 | 93 | 124 | 135 | 0,96 | Pink |
| HRST-125/93 | 125 | 93 | 98 | 124 | 135 | 0,84 | Orange |
| HRST-150/93 | 150 | 93 | 102 | 149 | 160 | 1,79 | Red |
| HRST-150/102 | 150 | 102 | 108 | 149 | 160 | 1,63 | White |
| HRST-150/108 | 150 | 108 | 115 | 149 | 160 | 1,43 | Blue |
| HRST-150/115 | 150 | 115 | 120 | 149 | 160 | 1,28 | Orange |
| HRST-175/118 | 175 | 118 | 125 | 174 | 185 | 2,16 | Purple |
| HRST-175/125 | 175 | 125 | 132 | 174 | 185 | 1,93 | Yellow |
| HRST-175/132 | 175 | 132 | 138 | 174 | 185 | 1,72 | Green |
| HRST-175/138 | 175 | 138 | 145 | 174 | 185 | 1,47 | Pink |
| HRST-200/136 | 200 | 136 | 143 | 199 | 210 | 2,73 | Red |
| HRST-200/143 | 200 | 143 | 150 | 199 | 210 | 2,48 | White |
| HRST-200/150 | 200 | 150 | 157 | 199 | 210 | 2,20 | Blue |
| HRST-200/157 | 200 | 157 | 164 | 199 | 210 | 1,92 | Orange |
| HRST-200/164 | 200 | 164 | 170 | 199 | 210 | 1,67 | Yellow |

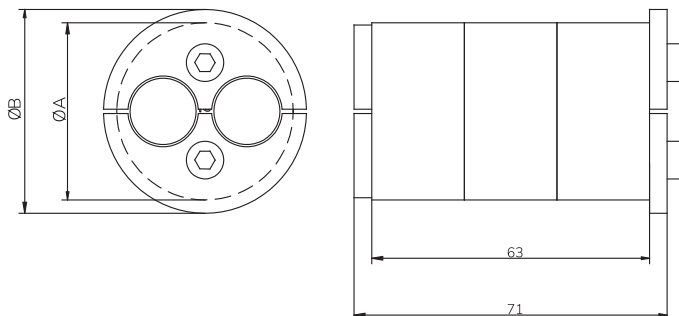
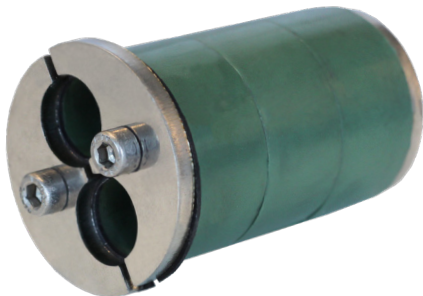
→ Installation references

| | |
|------------------------|-----|
| See assembly parts | 69 |
| See installation guide | 127 |
| See inspection check | 180 |

HRST 40 2D15

HTS HRST multihole designed for the sealing of up to 2 cables with an external diameter between 10 and 15 mm.

- Empty cable space to be filled with Plug HRST 2D15.
- Ex available under request.

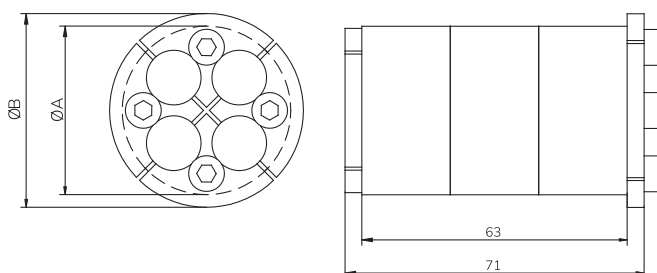
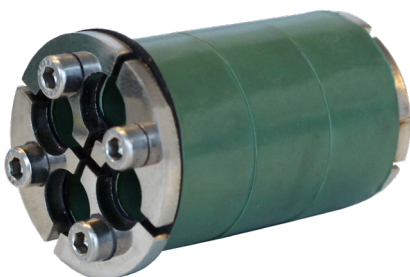


| DESCRIPTION | SLEEVE SIZE NEEDED | NUMBER OF CABLES | SEALING FROM | SEALING TO | A (mm) | B (mm) | NUMBER OF BOLT | BOLT SIZE | WEIGHT (Kg) |
|----------------|--------------------|------------------|--------------|------------|--------|--------|----------------|-----------|-------------|
| HRST 40 2D15 | 40 | 4 | 10 | 15 | 40 | 46 | 2 | M5 | 0,17 |
| Plug HRST 2D15 | | | | - | | | | | 0,02 |

HRST 40 4D12

HTS HRST multihole designed for the sealing of up to 4 cables with an external diameter between 8 and 12 mm.

- Empty cable space to be filled with Plug HRST 4D12
- Ex available under request.



| DESCRIPTION | SLEEVE SIZE NEEDED | NUMBER OF CABLES | SEALING FROM | SEALING TO | A (mm) | B (mm) | NUMBER OF BOLT | BOLT SIZE | WEIGHT (Kg) |
|----------------|--------------------|------------------|--------------|------------|--------|--------|----------------|-----------|-------------|
| HRST 40 4D12 | 40 | 4 | 8 | 12 | 40 | 46 | 4 | M5 | 0,16 |
| Plug HRST 4D12 | | | | - | | | | | 0,02 |

Installation references

| | |
|------------------------|-----|
| See assembly parts | 69 |
| See installation guide | 127 |
| See inspection check | 181 |