



# ACCESSORIES



## ■ → **LUBRICANT**

HTS Lubricant (Ref. 967) is used to facilitate positioning the blocks and elements of a transit during an installation.

The lubricant remains soft and will not dry out with the passing of time, ensuring that future modifications or dismantling will not be impeded.

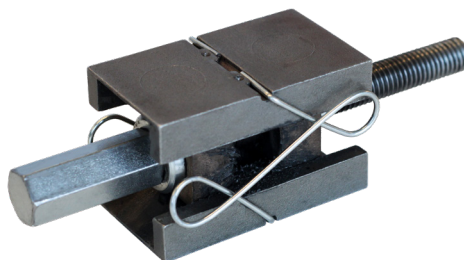


## ■ → **COMPRESSION TOOL**

This re-usable compression tool is designed to apply compression to the system before placing the endpacker within the frame.

This makes the operation of installing the compression system much easier than a conventional bolt-type system.

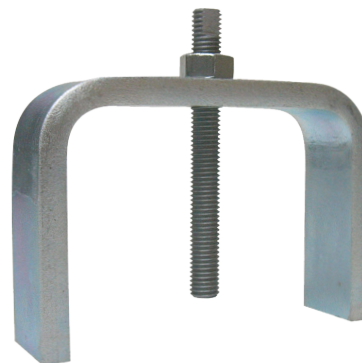
- Available in two versions for different frame internal width; 60mm (Ref. 982) and 120mm (Ref. 981).



## ■ → **PULLER**

The Puller Tool (Ref. 980) is used to facilitate the modification or dismantling of an installation.

This re-usable tool is designed to extract the compression system without damaging the frame and reducing dismantling time up to 50%. This also means that you can re-use the HTS compression system.



## ■ → **WELDING FIXING TOOL**

The Welding Fixing (Ref. 974) Tool is used to facilitate the welding process on a marine frame.

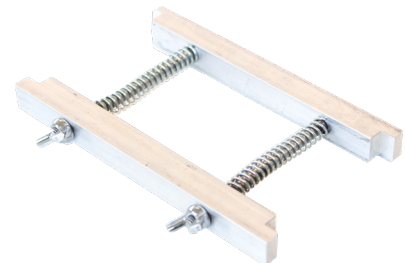
This re-usable tool is designed to hold the frame in position during the welding process, avoiding deformations due to high temperature.



## ■ → **CLAMP TOOL**

The Clamp Tool (Ref. 969) is used to aid onsite installation.

This re-usable tool is designed to hold the blocks or cables in position during an installation, especially useful in horizontal frames, partial installations or when the amount of cables makes the installation uneasy.



## → **SILICONE FIREPROOF SEALANT**

---

HTS Silicone Fireproof Sealant (Ref. 962) is used to secure installation in marine bolted frames and civil bolted frames and sleeves.

Fireproof sealant should be applied between the flange of the frame and the structure to ensure a tight seal and avoid possible gaps.



## → **MASTIC**

---

HTS Mastic (Ref. 966) is used to secure installation in civil bolted frames and sleeves.

Mastic should be applied between the flange of the frame and the structure to ensure a tight seal and avoid possible gaps.



## → BACKING PLATE

HTS Backing Plates (Ref. TABP) are used in conjunction with HTS flanged frames to add finished appearance to an installation.

Backing plates are designed to be installed on the opposite side of a frame, giving a wall or structure finished appearance.

Length (thickness of wall) and frame model should be indicated when ordering.

REFERENCE	FRAME SIZE
TABP 2	2
TABP 4	4
TABP 6	6
TABP 8	8

Also available in multiple aperture frame sizes.



## → POLYSTYRENE MOULD

HTS Polystyrene moulds are used to protect the inside of a frame during a casted installation in a floor or wall.

Reference	Type	Frame Size
965/2	Rectangular	2
965/4	Rectangular	4
965/6	Rectangular	6
965/8	Rectangular	8
962/30	Round	30
962/40	Round	40
962/50	Round	50
962/70	Round	70
962/100	Round	100
962/125	Round	125
962/150	Round	150
962/175	Round	175
962/200	Round	200

