



DATA CENTER

CABLE AND PIPE PENETRATIONS SEALING SYSTEM

www.hts-mct.com



Advantages

- +++ 100% Safety
- +++ Fire resistance: 360 minutes of integrity and 180 minutes of insulation
- +++ IP Protection: IP66 - IP67
- +++ Optimization: air management
- +++ Energy cost reduction
- +++ Unused space is reserved for future cables and pipes
- +++ Total inspectability
- +++ Flexibility
- +++ Swift installation and inspection
- +++ Cost effectiveness
- +++ No on-site modifications
- +++ No waste material

Protect your information

Hawke is the perfect sealing system for data centers.

The Hawke sealing system is a first class product, designed to meet the stringent demands of even the most hazardous environments.

Our company boasts an extensive array of certifications issued by the world's leading certifying authorities.

Main applications

- Entry and aerial exits of power cables into the building (CT and/or substation)
- Entries and exits for auxiliary generators (containers)
- Entrances to rack rooms
- Manholes
- Electrical panels
- Busbars
- Cooling pipes
- Roof entries (goose neck)

HTS cable and pipe sealing systems ensure the integrity of a wall or bulkhead against various hazardous situations, acting as a passive protection system that safeguards installations, equipment, and people.

Offers protection against



Fire



Water



Noise



Explosions



Radiation



Chemicals



EMC



Gas

ROOM COMPARTMENTALIZATION

Rectangular HCX



Characteristics

- HTS's civil sealing systems offer protection (against water, fire, gas, etc.) for cable and pipe entries passing through a wall.
- HTS frames can be installed within a concrete wall, cemented into a wall, bolted onto a wall, or welded or bolted to a metal structure.

- Used for cable sealing in walls and floors.

CPD implementation



Video



HTS - Standard HCX MCT.

Round Standard HRST



Characteristics

- Without blocks, for individual cables/pipes.
- HTS's circular sealing systems effectively seal cables and pipes passing through circular openings.
- Each size of HRST can seal a wide range of diameters with no need for on-site modifications.
- Available to seal from 4mm up to 170mm external diameter.
- Manufactured in intumescent elastomer polymer with stainless steel front and back plates.

- Provides optimal protection against risks such as water, fire, gas, etc.
- HRST exclusively used for sealing a single cable or pipe in a circular

CPD implementation

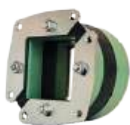


Video



HTS - HRST Round System.

Round Standard HRT0



Characteristics

- With blocks, for multiple cables/pipes.
- HTS's circular sealing systems effectively seal cables and pipes passing through circular openings.
- Sealing is achieved by tightening the compression screws, which expand the system radially, exerting pressure against the outer sleeve sealing the cables, plugs or interior pipes.

- Our seals for underground environments are the ideal solution for sealing around electrical cables within ducts, **underground chambers, and manholes**, thus providing optimal protection against risks such as water, fire, gas, etc.
- HRT0 exclusively used for sealing several cables or pipes in a circular

CPD implementation



Video



HTS - MCT HTR0 Round Frames.

H-DM



Characteristics

- Its modular design allows for modifications just as easily as in standard installations.
- Using an H-DM is an easier and faster alternative to conventional cable entries. IP protection.

- HTS H-DM system is a low weight (aluminium) cable sealing solution, designed for sealing **electrical panel boards and cabinets** against external conditions.

CPD implementation



Video



HTS - H-DM Cabinet Seal.

HCLX/HCLOX



Characteristics

- Our system features a frame with dimensions larger than our standard frames and a block specially designed for the dimensions and cross-section of large-size armored bars or ducts that need to be sealed.

- For use with large-size busbars and ducts.

CPD implementation



HAWKE INSTALLERS APP



Efficient installation

Calculate the best combination of materials.



Manual configuration

Modify and adapt configurations manually.



Preferences selection

Export material lists, reports and installation drawings.



Project preview

Preview the transit with colour coded blocks.



On-site modification

Adjust cable positions directly on the drawings.



Project exportation

Export project summary for quick quotation

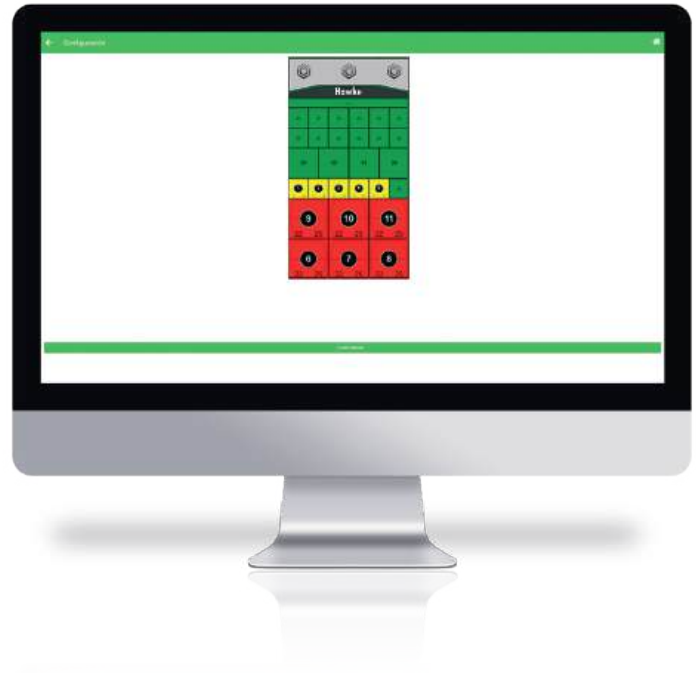
HAWKE MANAGEMENT SOFTWARE (HMS)

Develop your own MCT design

This innovative software calculates automatically material lists and its distribution, while maintaining traceability of all cable data, saturation percentages per area.

Key features:

- Save time designing your projects.
- Handle large quantities of cables and transits.
- Easily import cable schedules and project data.
- Automatically or manually calculate the best combination of materials.
- Export material lists, reports and installation drawings.
- Modify cables position directly on the drawing.
- Preview the transit with colour coded blocks.
- Export project summaries for quick quotation requests.
- Share projects through the internal server.

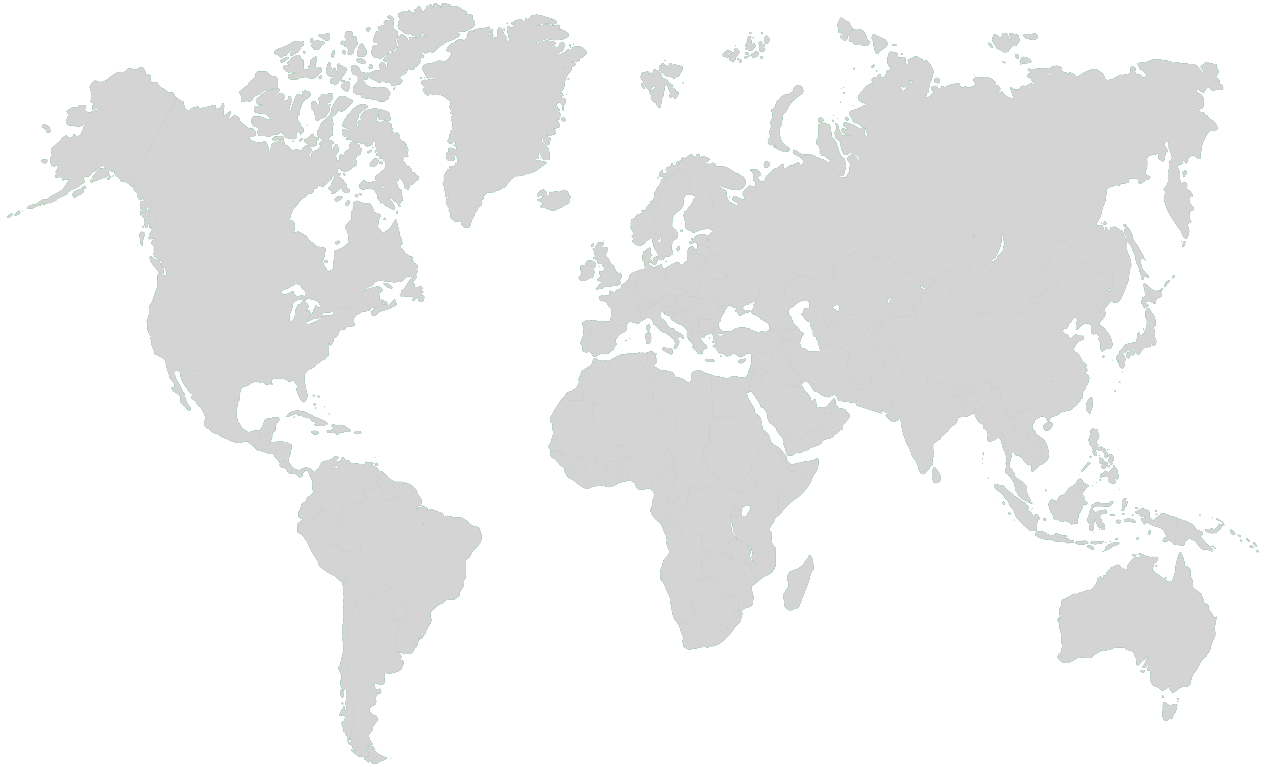


Ease the installation on-site

Hawke Installers App eases the installation of your transit projects on-site, providing you with all the necessary information for a successful execution.

Designed for mobile devices (smartphone or tablet, iOS/Android), the app allows installers to automatically calculate the best configuration for transits, obtaining the recommended distribution throughout the system, material lists, colour coded drawings and any other important information.

Additionally, the worker can access the product catalogue at any time, as well as installation instructions and tips, installation videos, and contact Hawke Transit System for technical support. All these features help reduce installation time and prevent possible installation errors.



HTS Global reach with reliable local support for MCT's

We help industries worldwide maintain safety, efficiency, and compliance—because protecting critical infrastructure can't wait. Our global network of offices and distributors ensures that no matter where your project is, you have full support.

Find your nearest contact at WWW.HTS-MCT.COM and get the right solution exactly when you need it.

